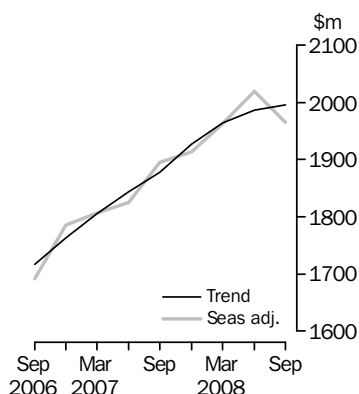


TOURIST ACCOMMODATION, AUSTRALIA

EMBARGO: 11.30AM (CANBERRA TIME) TUES 6 JAN 2009

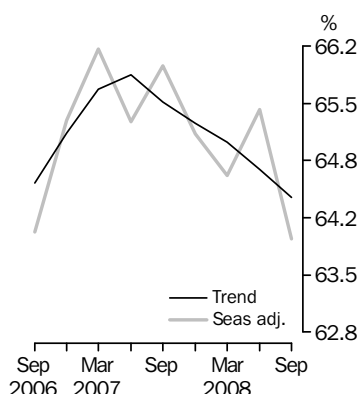
ACCOMMODATION TAKINGS

Australia



ROOM OCCUPANCY RATE

Australia



INQUIRIES

For further information about these and related statistics, contact the National Information and Referral Service on 1300 135 070.

KEY FIGURES

ACCOMMODATION WITH 15 ROOMS OR MORE

	<i>Jun Qtr 08</i>	<i>Sep Qtr 08</i>	<i>Jun Qtr 08 to Sep Qtr 08</i>	<i>Sep Qtr 07 to Sep Qtr 08</i>
Trend				
Takings from accommodation (\$m)	1 986.1	1 996.1	0.5 %	6.3 %
Room occupancy rate (%)	64.7	64.4	-0.3 pts	-1.1 pts
Seasonally Adjusted				
Takings from accommodation (\$m)	2 019.1	1 964.8	-2.7 %	3.7 %
Room occupancy rate (%)	65.4	63.9	-1.5 pts	-2.1 pts

Note: Hotels, motels and serviced apartments

KEY POINTS

ACCOMMODATION TAKINGS

- In September quarter 2008, the trend estimate of total accommodation takings for hotels, motels and serviced apartments with 15 or more rooms increased by 0.5% to \$1,996.1 million compared with June quarter 2008.
- Over the same period, the seasonally adjusted estimate dropped by 2.7% to \$1964.8 million. This is the first decline in seasonally adjusted takings since March quarter 2004.

ROOM OCCUPANCY RATE

- The trend estimate of a 64.4% room occupancy rate for hotels, motels and serviced apartments with 15 or more rooms for September quarter 2008 was slightly lower than the trend estimate of 64.7% for the previous quarter.
- This is the fifth consecutive quarterly decline in the trend estimate of room occupancy rates for hotels, motels and serviced apartments with 15 or more rooms.
- At 63.9%, the seasonally adjusted room occupancy rate was 1.5 percentage points below the June quarter 2008 level.

NOTES

FORTHCOMING ISSUES

ISSUE (Quarter)

RELEASE DATE

December 2008

26 March 2009

March 2009

26 June 2009

.....

ABOUT THIS ISSUE

This issue presents results from the September quarter 2008 Survey of Tourist Accommodation (STA) for the following categories of establishments:

- licensed hotels and resorts with facilities and 5 or more rooms
- motels, private hotels and guest houses with facilities and 5 or more rooms
- serviced apartments with 5 or more units
- caravan parks with 40 or more powered sites
- holiday flats, units and houses of letting entities with 15 or more rooms or units
- visitor hostels with 25 or more bed spaces.

DATA NOTES

As advised in the December quarter 2007 issue of this publication, Autoregressive Integrated Moving Averages (ARIMA) modelling has been incorporated into the seasonal adjustment process for the majority of the tourist accommodation series and all series have a changed treatment of the trading day component. As a result of these changes the seasonally adjusted and, to a lesser extent, the trend series have been revised. For further information, see paragraphs 22 and 23 of the Seasonal Adjustment section of the Explanatory Notes.

Brian Pink

Australian Statistician

CONTENTS

	<i>page</i>
Abbreviations	4
Summary of Findings	5

TABLES

ORIGINAL, SEASONALLY ADJUSTED AND TREND

1 Hotels, motels and serviced apartments with 15 or more rooms	10
---	----

SUMMARY

2 Hotels, motels and serviced apartments	12
3 Licensed hotels and resorts	14
4 Motels, private hotels and guest houses	16
5 Serviced apartments	18
6 Caravan parks	20
7 Holiday flats, units and houses	22
8 Visitor hostels	24

STAR GRADING

9 Hotels, motels and serviced apartments with 5-14 rooms	25
10 Hotels, motels and serviced apartments with 15 or more rooms	27
11 Hotels, motels and serviced apartments with 5 or more rooms	29

STATES AND TERRITORIES

12 Hotels, motels and serviced apartments with 5-14 rooms	31
13 Hotels, motels and serviced apartments with 15 or more rooms	34
14 Hotels, motels and serviced apartments with 5 or more rooms	37
15 Caravan parks, short-term	40
16 Caravan parks, long-term	43
17 Caravan parks, total	46
18 Holiday flats, units and houses, real estate agents	49
19 Holiday flats, units and houses, other letting entities	51
20 Holiday flats, units and houses, total	53
21 Visitor hostels	55

OTHER INFORMATION

Explanatory Notes	57
Glossary	64

ABBREVIATIONS

'000	thousand
\$'000	thousand dollars
\$m	million dollars
AAA	Australian Automobile Association
ABS	Australian Bureau of Statistics
ACT	Australian Capital Territory
ASGC	Australian Standard Geographical Classification
cat. no.	Catalogue number
GST	goods and services tax
no.	number
NSW	New South Wales
NT	Northern Territory
pts	percentage points
qtr	quarter
Qld	Queensland
SA	South Australia
SLA	statistical local area
STA	Survey of Tourist Accommodation
Tas.	Tasmania
Vic.	Victoria
WA	Western Australia

SUMMARY OF FINDINGS

ORIGINAL

Hotels, motels and serviced apartments

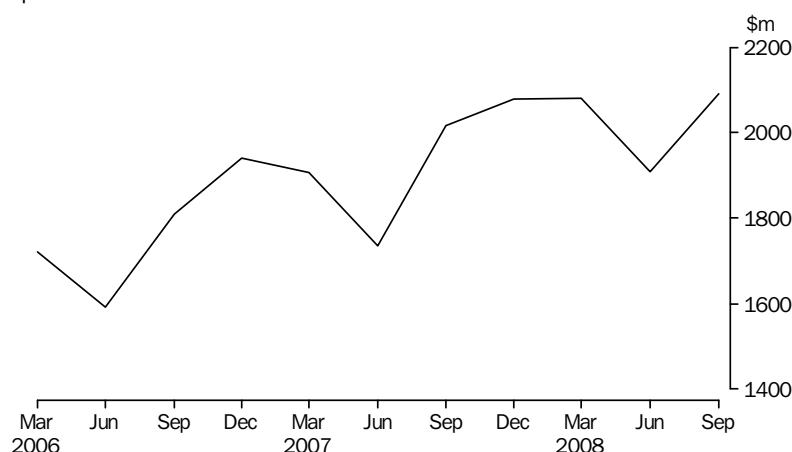
This summary contains key findings for original estimates. While trend and seasonally adjusted data are only available for hotels, motels and serviced apartments with 15 or more rooms, original estimates have two additional data series comprising hotels, motels and serviced apartments with 5 to 14 rooms and 5 or more rooms.

Original series are impacted by seasonal variations and irregular or non-seasonal influences and comparisons between quarters should be made with caution.

ACCOMMODATION TAKINGS

In September quarter 2008, accommodation takings were \$2,091.6 million for hotels, motels and serviced apartments with 5 or more rooms, comprising \$2,014.8 million for hotels, motels and serviced apartments with 15 or more rooms and \$76.9 million for hotels, motels and serviced apartments with 5 to 14 rooms.

TAKINGS FROM ACCOMMODATION, Hotels, motels and serviced apartments with 5 or more rooms—Australia



Accommodation takings in September quarter 2008 for hotels, motels and serviced apartments with 15 or more rooms were highest in New South Wales (\$626.1 million) and Queensland (\$565.6 million).

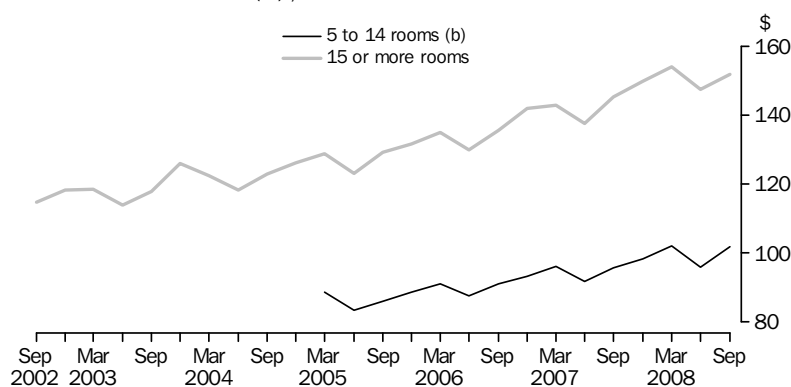
The September quarter 2008 average takings per room night occupied were \$149.10 for establishments with 5 or more rooms. This was heavily influenced by hotels, motels and serviced apartments with 15 or more rooms which contribute 96.3% to total takings, and had an average takings per room night occupied of \$151.79. The average for 5 to 14 room establishments was \$101.89.

SUMMARY OF FINDINGS *continued*

Hotels, motels and
serviced apartments
continued

ACCOMMODATION TAKINGS *continued*

AVERAGE TAKINGS (a), Australia



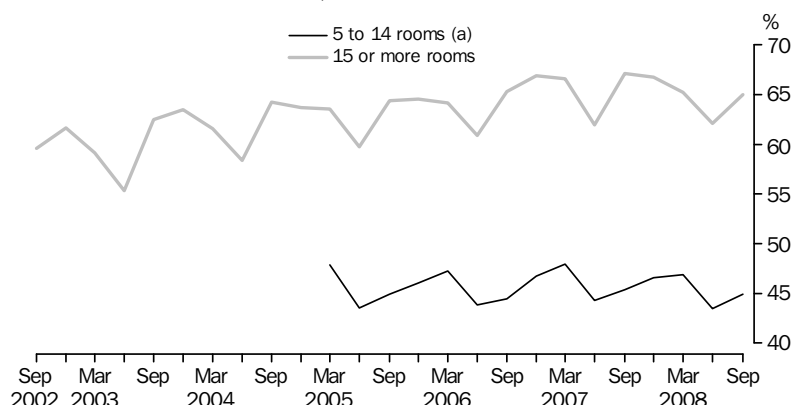
(a) Per room night occupied.

(b) These establishments were included in the survey from March 2005 onwards.

ROOM OCCUPANCY RATE

The room occupancy rate for hotels, motels and serviced apartments with 5 or more rooms was 63.4% in September quarter 2008. For hotels, motels and serviced apartments with 15 or more rooms, the room occupancy rate was 65.0%, while demand for 5 to 14 room hotels, motels and serviced apartments was lower, as reflected by a room occupancy rate of 44.9%.

ROOM OCCUPANCY RATE, Australia



(a) These establishments were included in the survey from March 2005 onwards.

ROOM NIGHTS OCCUPIED

Room nights occupied were 14.0 million in September quarter 2008 for hotels, motels and serviced apartments with 5 or more rooms. For hotels, motels and serviced apartments with 15 or more rooms, room nights occupied were 13.3 million in September quarter 2008, while for establishments with 5 to 14 rooms, room nights occupied were 0.8 million.

SUMMARY OF FINDINGS *continued*

Hotels, motels and serviced apartments continued

ROOM NIGHTS OCCUPIED *continued*

New South Wales contributed the highest proportion (30.5%) of occupied rooms for hotels, motels and serviced apartments with 15 or more rooms, followed by Queensland at 29.2%.

AVERAGE LENGTH OF STAY

The average length of stay in September quarter 2008 for hotels, motels and serviced apartments with 5 or more rooms was 2.2 days. In establishments with 15 or more rooms, the average length of stay was 2.3 days. For establishments with 5 to 14 rooms, the average length of stay was 1.8 days.

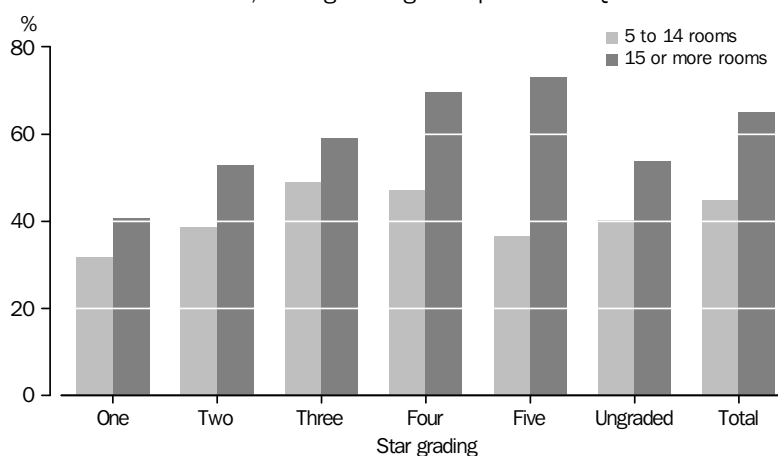
Queensland (2.7 days) reported the longest average length of stay for hotels, motels and serviced apartments with 15 or more rooms, followed by Western Australia (2.4 days). The shortest average length of stay was in Tasmania (1.9 days).

STAR GRADING

In September quarter 2008, the room occupancy rate for five-star hotels, motels and serviced apartments with 5 or more rooms was 72.6% compared with 37.7% for one-star. For hotels, motels and serviced apartments with 15 or more rooms, the room occupancy rate was 72.9% for five-star establishments compared with 40.7% for one-star establishments.

In the 5-14 rooms category, three-star establishments had the highest room occupancy rates in September quarter 2008 (48.8%), compared with one-star establishments at 31.6%.

OCCUPANCY RATES, Stargrading—September Qtr 2008



In September quarter 2008, the average takings per room night occupied for five-star hotels, motels and serviced apartments with 5 or more rooms was \$238.09 compared with \$84.71 for two-star. In the 15 or more rooms category, the average takings was \$238.06 for five-star establishments compared with \$88.08 for two-star establishments.

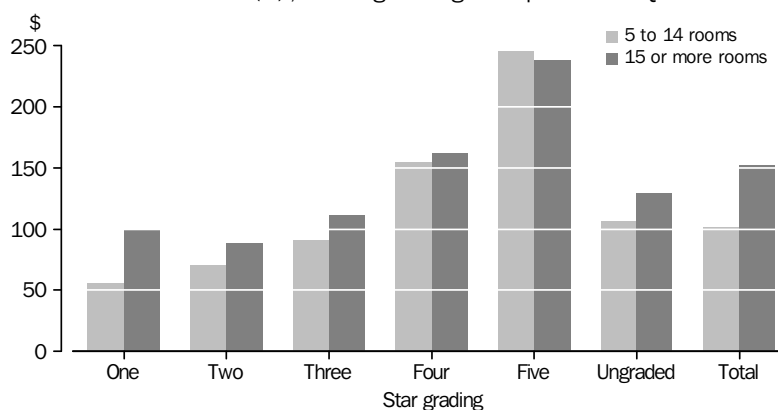
For establishments with 5 to 14 rooms, five-star establishments had the highest average takings per room nights occupied of \$245.39, compared with one-star establishments at \$55.84.

SUMMARY OF FINDINGS *continued*

Hotels, motels and serviced apartments continued

STAR GRADING *continued*

AVERAGE TAKINGS (a), Star grading—September Qtr 2008



(a) Per room night occupied

Caravan parks, holiday flats, units and houses, and visitor hostels

ACCOMMODATION TAKINGS

In September quarter 2008, accommodation takings for caravan parks were \$254.9 million. New South Wales (\$74.3 million) had the highest accommodation takings for all caravan parks for September quarter 2008, contributing 29.1% of the total.

Short-term caravan park takings were \$212.0 million in September quarter 2008 which was 83.2% of total caravan park takings.

Accommodation takings for holiday flats, units and houses were \$151.2 million in September quarter 2008. Real estate takings accounted for 22.5% of total holiday flats, units and houses takings, the rest being for other letting entities.

For visitor hostels, accommodation takings were \$59.8 million in September quarter 2008.

OCCUPANCY RATE

The site occupancy rate for all caravan parks in September quarter 2008 was 53.0%. Short-term caravan park occupancy was 49.7% and long-term caravan park occupancy was 75.8%.

For holiday flats, units and houses, the unit occupancy rate was 46.3% in September quarter 2008.

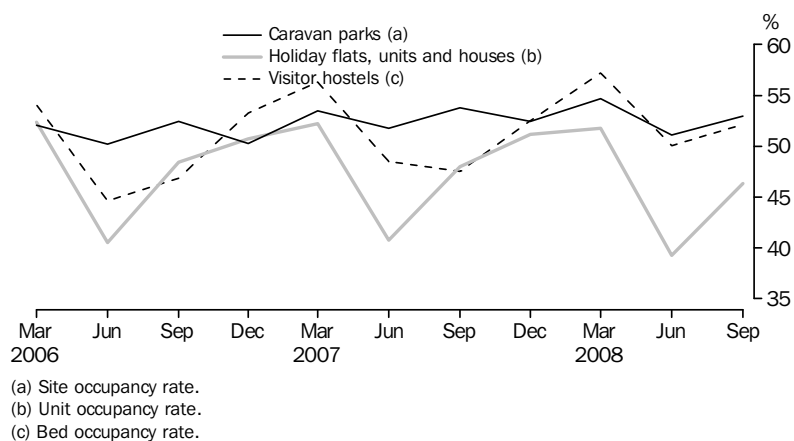
The bed occupancy rate for visitor hostels in September quarter 2008 was 52.2%. Northern Territory, Queensland and Australian Capital Territory had the highest bed occupancy rates for visitor hostels in September quarter 2008 with 69.0%, 60.8% and 60.0% respectively.

SUMMARY OF FINDINGS *continued*

Caravan parks, holiday
flats, units and houses,
and visitor hostels
continued

OCCUPANCY RATE *continued*

OCCUPANCY RATES, Australia



Period	ORIGINAL		SEASONALLY ADJUSTED		TREND	
	Takings from accommodation		Takings from accommodation		Takings from accommodation	
	\$m	Room occupancy rate	\$m	Room occupancy rate	\$m	Room occupancy rate
2005						
March Quarter	1 525.3	63.6	1 499.8	63.1	1 496.8	62.9
June Quarter	1 395.0	59.7	1 539.7	63.2	1 534.9	63.1
September Quarter	1 618.2	64.4	1 572.3	63.0	1 564.3	63.1
December Quarter	1 650.9	64.5	1 576.5	62.9	1 591.1	63.3
2006						
March Quarter	1 649.2	64.2	1 625.5	63.8	1 622.4	63.6
June Quarter	1 526.5	60.9	1 676.3	64.3	1 664.8	64.0
September Quarter	1 740.5	65.3	1 691.4	64.0	1 716.6	64.6
December Quarter	1 866.6	66.9	1 786.2	65.3	1 763.4	65.2
2007						
March Quarter	1 832.3	66.6	1 807.0	66.2	1 806.1	65.7
June Quarter	1 667.1	61.9	1 825.4	65.3	1 843.0	65.9
September Quarter	1 942.6	67.1	1 894.6	66.0	1 877.6	65.5
December Quarter	2 000.6	66.8	1 913.3	65.2	1 926.4	65.3
2008						
March Quarter	1 999.8	65.2	1 962.0	64.7	1 964.2	65.1
June Quarter	1 838.3	62.1	2 019.1	65.4	1 986.1	64.7
September Quarter	2 014.8	65.0	1 964.8	63.9	1 996.1	64.4

Period	ORIGINAL		SEASONALLY ADJUSTED		TREND	
	Takings change	Room occupancy	Takings change	Room occupancy	Takings change	Room occupancy
	from prev. qtr	change from prev. qtr	from prev. qtr	change from prev. qtr	from prev. qtr	change from prev. qtr
	%	pts	%	pts	%	pts
2005						
March Quarter	0.8	-0.2	3.9	0.9	2.6	0.3
June Quarter	-8.5	-3.8	2.7	0.1	2.5	0.1
September Quarter	16.0	4.7	2.1	-0.3	1.9	—
December Quarter	2.0	0.1	0.3	—	1.7	0.2
2006						
March Quarter	-0.1	-0.3	3.1	0.8	2.0	0.4
June Quarter	-7.4	-3.3	3.1	0.6	2.6	0.4
September Quarter	14.0	4.4	0.9	-0.4	3.1	0.6
December Quarter	7.2	1.6	5.6	1.3	2.7	0.6
2007						
March Quarter	-1.8	-0.3	1.2	0.8	2.4	0.5
June Quarter	-9.0	-4.7	1.0	-0.9	2.0	0.2
September Quarter	16.5	5.2	3.8	0.7	1.9	-0.3
December Quarter	3.0	-0.4	1.0	-0.8	2.6	-0.2
2008						
March Quarter	—	-1.6	2.5	-0.5	2.0	-0.2
June Quarter	-8.1	-3.1	2.9	0.8	1.1	-0.3
September Quarter	9.6	2.9	-2.7	-1.5	0.5	-0.3

— nil or rounded to zero (including null cells)

SUMMARY OF HOTELS, MOTELS AND SERVICED APARTMENTS, Australia

<i>Period</i>	<i>Establishments</i> no.	<i>Rooms</i> no.	<i>Bed spaces</i> no.	<i>Persons employed</i> no.	<i>Room nights occupied</i> '000	<i>Room occupancy rate</i> %
HOTELS MOTELS AND SERVICED APARTMENTS WITH 5 TO 14 ROOMS						
2007						
September Quarter	1 921	18 475	54 293	11 756	768.3	45.4
December Quarter	1 925	18 470	54 344	11 812	787.6	46.6
2008						
March Quarter	1 931	18 570	54 506	11 750	788.3	46.9
June Quarter	1 925	18 563	54 337	11 590	728.7	43.5
September Quarter	1 904	18 347	53 870	11 330	754.3	44.9
Year ended September 2007	3 084.7	46.1
Year ended September 2008	3 058.9	45.5
HOTELS MOTELS AND SERVICED APARTMENTS WITH 15 OR MORE ROOMS						
2007						
September Quarter	4 220	216 845	620 769	115 439	13 380.7	67.1
December Quarter	4 235	218 317	624 751	116 237	13 359.4	66.8
2008						
March Quarter	4 250	220 303	627 952	116 165	12 981.2	65.2
June Quarter	4 266	221 567	632 202	116 629	12 474.1	62.1
September Quarter	4 267	222 266	634 395	116 999	13 273.6	65.0
Year ended September 2007	51 503.8	65.7
Year ended September 2008	52 088.2	64.8
HOTELS MOTELS AND SERVICED APARTMENTS WITH 5 OR MORE ROOMS						
2007						
September Quarter	6 141	235 320	675 062	127 195	14 149.1	65.4
December Quarter	6 160	236 787	679 095	128 049	14 147.0	65.2
2008						
March Quarter	6 181	238 873	682 458	127 915	13 769.5	63.8
June Quarter	6 191	240 130	686 539	128 219	13 202.8	60.7
September Quarter	6 171	240 613	688 265	128 329	14 027.8	63.4
Year ended September 2007	54 588.5	64.1
Year ended September 2008	55 147.1	63.3
..	not applicable					

<i>Period</i>	<i>Guest nights occupied</i> '000	<i>Bed occupancy rate</i> %	<i>Guest arrivals</i> '000	<i>Average length of stay</i> days	<i>Takings from accommodation</i> \$'000
HOTELS MOTELS AND SERVICED APARTMENTS WITH 5 TO 14 ROOMS					
2007					
September Quarter	1 403.4	28.2	786.7	1.8	73 442
December Quarter	1 461.6	29.4	817.3	1.8	77 467
2008					
March Quarter	1 502.0	30.4	819.2	1.8	80 407
June Quarter	1 301.1	26.5	718.9	1.8	69 914
September Quarter	1 379.6	28.0	748.9	1.8	76 854
Year ended September 2007	5 723.5	29.2	3 173.0	1.8	290 529
Year ended September 2008	5 644.3	28.6	3 104.3	1.8	304 642
HOTELS MOTELS AND SERVICED APARTMENTS WITH 15 OR MORE ROOMS					
2007					
September Quarter	23 372.8	41.0	10 483.5	2.2	1 942 581
December Quarter	23 620.1	41.2	10 755.3	2.2	2 000 634
2008					
March Quarter	23 178.2	40.9	9 957.0	2.3	1 999 773
June Quarter	20 885.7	36.5	9 520.6	2.2	1 838 302
September Quarter	23 176.8	39.7	10 243.9	2.3	2 014 752
Year ended September 2007	90 667.1	40.3	40 154.5	2.3	7 308 651
Year ended September 2008	90 860.8	39.6	40 476.7	2.2	7 853 462
HOTELS MOTELS AND SERVICED APARTMENTS WITH 5 OR MORE ROOMS					
2007					
September Quarter	24 776.2	39.9	11 270.2	2.2	2 016 023
December Quarter	25 081.8	40.3	11 572.5	2.2	2 078 102
2008					
March Quarter	24 680.2	40.1	10 776.2	2.3	2 080 180
June Quarter	22 186.8	35.7	10 239.5	2.2	1 908 216
September Quarter	24 556.4	38.8	10 992.8	2.2	2 091 606
Year ended September 2007	96 390.7	39.4	43 327.5	2.2	7 599 180
Year ended September 2008	96 505.1	38.7	43 581.1	2.2	8 158 104

SUMMARY OF LICENSED HOTELS AND RESORTS, AUSTRALIA

	<i>Establishments</i>	<i>Rooms</i>	<i>Bed spaces</i>	<i>Persons employed</i>	<i>Room nights occupied</i>	<i>Room occupancy rate</i>
	no.	no.	no.	no.	'000	%
.....						
LICENSED HOTELS WITH 5 TO 14 ROOMS						
.....						
2007						
September Quarter	446	4 268	11 377	6 873	144.6	37.0
December Quarter	442	4 228	11 289	6 797	148.7	38.4
March Quarter	449	4 286	11 353	6 703	148.7	37.9
2008						
June Quarter	447	4 283	11 316	6 625	141.9	36.6
September Quarter	440	4 209	11 156	6 422	143.3	37.1
Year ended September 2007	580.1	37.7
Year ended September 2008	582.6	37.5
.....						
LICENSED HOTELS WITH 15 OR MORE ROOMS						
.....						
2007						
September Quarter	832	81 334	213 573	70 778	5 402.7	72.2
December Quarter	833	81 372	213 005	71 253	5 381.7	72.2
March Quarter	833	81 619	212 148	70 746	5 211.2	70.7
2008						
June Quarter	837	81 809	213 533	71 315	4 971.8	67.0
September Quarter	837	82 006	214 185	71 418	5 193.4	68.9
Year ended September 2007	20 960.1	71.3
Year ended September 2008	20 758.1	69.7
.....						
LICENSED HOTELS WITH 5 OR MORE ROOMS						
.....						
2007						
September Quarter	1 278	85 602	224 950	77 651	5 547.3	70.5
December Quarter	1 275	85 600	224 294	78 050	5 530.4	70.6
March Quarter	1 282	85 905	223 501	77 449	5 359.8	69.1
2008						
June Quarter	1 284	86 092	224 849	77 940	5 113.7	65.5
September Quarter	1 277	86 215	225 341	77 840	5 336.8	67.4
Year ended September 2007	21 540.1	69.6
Year ended September 2008	21 340.7	68.1
.....						
..	not applicable					

SUMMARY OF LICENSED HOTELS AND RESORTS, AUSTRALIA *continued*

	Guest nights occupied	Bed occupancy rate	Guest arrivals	Average length of stay	Takings from accommodation
	'000	%	'000	days	\$'000
.....					
LICENSED HOTELS WITH 5 TO 14 ROOMS					
2007					
September Quarter	217.4	20.9	128.1	1.7	10 401
December Quarter	228.8	22.1	133.3	1.7	11 108
March Quarter	230.7	22.2	133.4	1.7	11 227
2008					
June Quarter	212.8	20.8	121.5	1.8	10 537
September Quarter	211.9	20.7	119.3	1.8	10 739
Year ended September 2007	892.2	21.8	515.4	1.7	41 019
Year ended September 2008	884.2	21.5	507.5	1.7	43 612
.....					
LICENSED HOTELS WITH 15 OR MORE ROOMS					
2007					
September Quarter	8 662.6	44.1	3 962.9	2.2	926 677
December Quarter	8 667.1	44.4	4 042.7	2.1	969 613
March Quarter	8 449.8	44.3	3 695.7	2.3	969 473
2008					
June Quarter	7 625.2	39.4	3 583.9	2.1	880 064
September Quarter	8 231.0	41.9	3 734.6	2.2	933 441
Year ended September 2007	33 778.5	43.7	15 205.2	2.2	3 549 665
Year ended September 2008	32 973.1	42.5	15 056.9	2.2	3 752 591
.....					
LICENSED HOTELS WITH 5 OR MORE ROOMS					
2007					
September Quarter	8 880.0	42.9	4 091.0	2.2	937 077
December Quarter	8 896.0	43.3	4 176.0	2.1	980 721
March Quarter	8 680.6	43.1	3 829.2	2.3	980 700
2008					
June Quarter	7 838.0	38.5	3 705.3	2.1	890 602
September Quarter	8 442.8	40.8	3 853.9	2.2	944 180
Year ended September 2007	34 670.7	42.6	15 720.7	2.2	3 590 684
Year ended September 2008	33 857.3	41.4	15 564.4	2.2	3 796 203

SUMMARY OF MOTELS, PRIVATE HOTELS AND GUEST HOUSES, Australia

<i>Period</i>	<i>Establishments</i> no.	<i>Rooms</i> no.	<i>Bed spaces</i> no.	<i>Persons employed</i> no.	<i>Room nights occupied</i> '000	<i>Room occupancy rate</i> %
MOTELS AND GUEST HOUSES WITH 5 TO 14 ROOMS						
2007						
September Quarter	1 138	11 291	31 794	3 801	478.3	46.2
December Quarter	1 144	11 319	31 869	3 910	487.0	47.1
2008						
March Quarter	1 134	11 255	31 467	3 857	483.9	47.7
June Quarter	1 125	11 193	31 239	3 811	449.9	44.7
September Quarter	1 111	11 057	30 885	3 758	459.0	45.4
Year ended September 2007	1 915.1	46.8
Year ended September 2008	1 879.8	46.2
MOTELS AND GUEST HOUSES WITH 15 OR MORE ROOMS						
2007						
September Quarter	2 480	87 091	250 487	29 921	4 808.1	60.1
December Quarter	2 484	87 683	251 945	29 860	4 761.0	59.2
2008						
March Quarter	2 479	87 562	250 523	29 914	4 583.0	58.0
June Quarter	2 484	87 880	251 304	29 837	4 529.0	57.0
September Quarter	2 484	87 902	250 858	30 014	4 769.8	59.0
Year ended September 2007	18 463.4	58.5
Year ended September 2008	18 642.9	58.3
MOTELS AND GUEST HOUSES WITH 5 OR MORE ROOMS						
2007						
September Quarter	3 618	98 382	282 281	33 722	5 286.3	58.5
December Quarter	3 628	99 002	283 814	33 770	5 248.0	57.9
2008						
March Quarter	3 613	98 817	281 990	33 771	5 067.0	56.8
June Quarter	3 609	99 073	282 543	33 648	4 978.9	55.6
September Quarter	3 595	98 959	281 743	33 772	5 228.8	57.5
Year ended September 2007	20 378.5	57.2
Year ended September 2008	20 522.7	56.9
.. not applicable						

SUMMARY OF MOTELS, PRIVATE HOTELS AND GUEST HOUSES, Australia *continued*

<i>Period</i>	<i>Guest nights occupied</i> '000	<i>Bed occupancy rate</i> %	<i>Guest arrivals</i> '000	<i>Average length of stay</i> days	<i>Takings from accommodation</i> \$'000
MOTELS AND GUEST HOUSES WITH 5 TO 14 ROOMS					
2007					
September Quarter	841.5	28.9	525.1	1.6	44 858
December Quarter	865.2	29.7	538.6	1.6	46 713
2008					
March Quarter	876.7	30.9	541.3	1.6	48 121
June Quarter	767.8	27.3	474.0	1.6	42 560
September Quarter	802.4	28.4	495.3	1.6	46 253
Year ended September 2007	3 399.4	29.6	2 108.8	1.6	176 258
Year ended September 2008	3 312.1	29.1	2 049.2	1.6	183 648
MOTELS AND GUEST HOUSES WITH 15 OR MORE ROOMS					
2007					
September Quarter	8 157.0	35.4	4 519.4	1.8	527 771
December Quarter	8 125.1	35.2	4 587.3	1.8	530 408
2008					
March Quarter	7 892.1	34.9	4 260.4	1.9	517 464
June Quarter	7 385.2	32.5	4 061.4	1.8	501 748
September Quarter	8 100.7	35.1	4 425.0	1.8	547 739
Year ended September 2007	31 494.4	34.7	17 337.3	1.8	1 958 239
Year ended September 2008	31 503.1	34.4	17 334.1	1.8	2 097 360
MOTELS AND GUEST HOUSES WITH 5 OR MORE ROOMS					
2007					
September Quarter	8 998.6	34.7	5 044.5	1.8	572 629
December Quarter	8 990.4	34.6	5 125.8	1.8	577 121
2008					
March Quarter	8 768.8	34.5	4 801.8	1.8	565 585
June Quarter	8 152.9	31.9	4 535.4	1.8	544 309
September Quarter	8 903.1	34.4	4 920.4	1.8	593 992
Year ended September 2007	34 893.8	34.1	19 446.1	1.8	2 134 496
Year ended September 2008	34 815.2	33.8	19 383.3	1.8	2 281 008

SUMMARY OF SERVICED APARTMENTS, Australia

<i>Period</i>	<i>Establishments</i> no.	<i>Rooms</i> no.	<i>Bed spaces</i> no.	<i>Persons employed</i> no.	<i>Room nights occupied</i> '000	<i>Room occupancy rate</i> %
SERVICED APARTMENTS WITH 5 TO 14 ROOMS						
2007						
September Quarter	337	2 916	11 122	1 082	145.5	54.3
December Quarter	339	2 923	11 186	1 105	151.9	56.6
2008						
March Quarter	348	3 029	11 686	1 190	155.7	56.6
June Quarter	353	3 087	11 782	1 154	136.9	48.7
September Quarter	353	3 081	11 829	1 150	151.9	53.9
Year ended September 2007	589.6	55.4
Year ended September 2008	596.5	53.9
SERVICED APARTMENTS WITH 15 OR MORE ROOMS						
2007						
September Quarter	908	48 420	156 709	14 740	3 170.0	71.2
December Quarter	918	49 262	159 801	15 124	3 216.6	71.1
2008						
March Quarter	938	51 122	165 281	15 505	3 187.0	68.7
June Quarter	945	51 878	167 365	15 477	2 973.3	63.0
September Quarter	946	52 358	169 352	15 567	3 310.3	68.7
Year ended September 2007	12 080.3	69.0
Year ended September 2008	12 687.2	67.9
SERVICED APARTMENTS WITH 5 OR MORE ROOMS						
2007						
September Quarter	1 245	51 336	167 831	15 822	3 315.5	70.2
December Quarter	1 257	52 185	170 987	16 229	3 368.5	70.3
2008						
March Quarter	1 286	54 151	176 967	16 695	3 342.7	68.0
June Quarter	1 298	54 965	179 147	16 631	3 110.2	62.2
September Quarter	1 299	55 439	181 181	16 717	3 462.2	67.9
Year ended September 2007	12 669.9	68.2
Year ended September 2008	13 283.7	67.1
..	not applicable					

SUMMARY OF SERVICED APARTMENTS, Australia *continued*

<i>Period</i>	<i>Guest nights occupied</i> '000	<i>Bed occupancy rate</i> %	<i>Guest arrivals</i> '000	<i>Average length of stay</i> days	<i>Takings from accommodation</i> \$'000
---------------	--	--	-----------------------------------	---	---

SERVICED APARTMENTS WITH 5 TO 14 ROOMS

2007					
September Quarter	344.5	33.7	133.5	2.6	18 183
December Quarter	367.6	35.8	145.4	2.5	19 646
2008					
March Quarter	394.6	37.2	144.5	2.7	21 058
June Quarter	320.6	29.9	123.5	2.6	16 816
September Quarter	365.3	33.7	134.3	2.7	19 862
Year ended September 2007	1 431.9	35.4	548.8	2.6	73 252
Year ended September 2008	1 448.0	34.1	547.6	2.6	77 383

SERVICED APARTMENTS WITH 15 OR MORE ROOMS

2007					
September Quarter	6 553.2	45.5	2 001.2	3.3	488 134
December Quarter	6 827.8	46.6	2 125.3	3.2	500 613
2008					
March Quarter	6 836.3	45.6	2 000.8	3.4	512 836
June Quarter	5 875.3	38.6	1 875.3	3.1	456 490
September Quarter	6 845.1	44.0	2 084.3	3.3	533 572
Year ended September 2007	25 394.3	44.7	7 611.9	3.3	1 800 748
Year ended September 2008	26 384.6	43.7	8 085.7	3.3	2 003 511

SERVICED APARTMENTS WITH 5 OR MORE ROOMS

2007					
September Quarter	6 897.6	44.7	2 134.7	3.2	506 316
December Quarter	7 195.4	45.9	2 270.7	3.2	520 259
2008					
March Quarter	7 230.9	45.0	2 145.2	3.4	533 894
June Quarter	6 195.9	38.1	1 998.8	3.1	473 306
September Quarter	7 210.4	43.3	2 218.6	3.3	553 434
Year ended September 2007	26 826.1	44.0	8 160.7	3.3	1 873 999
Year ended September 2008	27 832.6	43.0	8 633.4	3.2	2 080 893

SUMMARY OF CARAVAN PARKS(a), Australia

CAPACITY

<i>Period</i>	<i>Establishments</i>	<i>On-site vans</i>	<i>Other powered sites</i>	<i>Unpowered sites</i>	<i>Cabins, flats units and villas</i>	<i>Total capacity</i>
no.	no.	no.	no.	no.	no.	no.
CARAVAN PARKS, SHORT TERM (b)						
2007						
September Quarter	1 459	13 250	125 290	38 749	26 428	203 717
December Quarter	1 456	13 264	126 223	38 884	26 299	204 670
2008						
March Quarter	1 449	13 647	125 263	38 703	26 812	204 425
June Quarter	1 449	13 762	124 866	38 322	27 079	204 029
September Quarter	1 443	13 870	123 196	38 117	27 865	203 048
Year ended September 2007
Year ended September 2008
CARAVAN PARKS, LONG TERM (b)						
2007						
September Quarter	230	4 019	17 240	1 959	6 661	29 879
December Quarter	227	4 053	17 049	1 921	6 608	29 631
2008						
March Quarter	224	4 285	16 540	1 967	6 606	29 398
June Quarter	226	4 081	16 862	1 832	6 677	29 452
September Quarter	224	4 183	16 067	1 907	6 908	29 065
Year ended September 2007
Year ended September 2008
CARAVAN PARKS, TOTAL						
2007						
September Quarter	1 689	17 269	142 530	40 708	33 089	233 596
December Quarter	1 683	17 317	143 272	40 805	32 907	234 301
2008						
March Quarter	1 673	17 932	141 803	40 670	33 418	233 823
June Quarter	1 675	17 843	141 728	40 154	33 756	233 481
September Quarter	1 667	18 053	139 263	40 024	34 773	232 113
Year ended September 2007
Year ended September 2008

.. not applicable

(b) For definitions of short-term and long-term caravan parks, see Glossary.

(a) Comprising establishments with 40 or more powered sites and cabins, flats, units and villas

SUMMARY OF CARAVAN PARKS(a), Australia *continued*

<i>Period</i>	<i>Persons employed</i>	<i>Sites occupied by long-term guests</i>	<i>Other sites permanently reserved</i>	<i>Site nights occupied</i>	<i>Site occupancy rate</i>	<i>Takings from accommodation</i>
	no.	no.	no.	'000	%	\$'000
CARAVAN PARKS, SHORT TERM (b)						
2007						
September Quarter	8 720	18 924	40 069	9 332.2	50.4	198 294
December Quarter	9 093	18 570	39 122	9 122.4	48.8	213 778
2008						
March Quarter	9 051	18 382	40 152	9 535.8	51.3	234 706
June Quarter	8 857	18 623	38 686	8 757.8	47.4	188 520
September Quarter	9 110	19 178	38 679	9 242.7	49.7	212 042
Year ended September 2007	36 171.0	48.8	778 934
Year ended September 2008	36 658.7	49.3	849 045
CARAVAN PARKS, LONG TERM (b)						
2007						
September Quarter	1 319	16 911	1 787	2 100.6	76.4	41 655
December Quarter	1 360	16 899	1 692	2 111.6	77.5	44 525
2008						
March Quarter	1 335	16 403	1 681	2 091.3	78.2	44 316
June Quarter	1 342	15 934	2 105	2 038.4	76.1	40 737
September Quarter	1 385	15 514	2 014	2 025.4	75.8	42 903
Year ended September 2007	8 335.7	75.9	159 423
Year ended September 2008	8 266.7	76.9	172 481
CARAVAN PARKS, TOTAL						
2007						
September Quarter	10 039	35 835	41 856	11 432.8	53.8	239 949
December Quarter	10 453	35 469	40 814	11 234.1	52.4	258 303
2008						
March Quarter	10 386	34 785	41 833	11 627.1	54.7	279 021
June Quarter	10 199	34 557	40 791	10 796.2	51.1	229 256
September Quarter	10 495	34 692	40 693	11 268.1	53.0	254 945
Year ended September 2007	44 506.7	52.3	938 357
Year ended September 2008	44 925.5	52.8	1 021 525

. . not applicable

(a) Comprising establishments with 40 or more powered sites and cabins, flats, units and villas

(b) For definitions of short-term and long-term caravan parks, see Glossary.

SUMMARY OF HOLIDAY FLATS, UNITS AND HOUSES, Australia

CAPACITY

<i>Period</i>	<i>Letting entities(a)</i>	<i>Single bedroom</i>	<i>Multiple bedroom</i>	<i>Total</i>	<i>Bed spaces</i>	<i>Persons employed(b)</i>
	no.	no.	no.	no.	no.	no.

REAL ESTATE AGENTS

2007						
September Quarter	155	605	12 955	13 560	76 631	. .
December Quarter	155	611	13 029	13 640	76 547	. .
2008						
March Quarter	155	653	13 070	13 723	76 903	. .
June Quarter	158	571	12 954	13 525	76 139	. .
September Quarter	158	609	13 004	13 613	75 318	. .
Year ended September 2007
Year ended September 2008

OTHER LETTING ENTITIES

2007						
September Quarter	428	4 378	10 631	15 009	61 331	2 527
December Quarter	431	4 351	10 798	15 149	62 265	2 542
2008						
March Quarter	428	4 312	10 863	15 175	62 556	2 450
June Quarter	430	4 361	10 889	15 250	62 385	2 470
September Quarter	428	4 189	10 887	15 076	61 672	2 526
Year ended September 2007
Year ended September 2008

HOLIDAY FLATS AND UNITS

2007						
September Quarter	583	4 983	23 586	28 569	137 962	. .
December Quarter	586	4 962	23 827	28 789	138 812	. .
2008						
March Quarter	583	4 965	23 933	28 898	139 459	. .
June Quarter	588	4 932	23 843	28 775	138 524	. .
September Quarter	586	4 798	23 891	28 689	136 990	. .
Year ended September 2007
Year ended September 2008

. . not applicable

(b) Employment numbers exclude real estate agents and their employees

(a) The number of owners, managers or real estate agents with 15 or more self-contained units

<i>Period</i>	<i>Unit nights occupied</i> '000	<i>Unit occupancy rate</i> %	<i>Unit lettings</i> '000	<i>Average length of stay</i> days	<i>Takings from accommodation</i> \$'000
REAL ESTATE AGENTS					
2007					
September Quarter	328.7	26.4	59.4	5.5	33 643
December Quarter	411.7	32.9	84.4	4.9	46 909
2008					
March Quarter	466.0	37.4	83.6	5.6	54 909
June Quarter	281.2	22.9	53.2	5.3	24 683
September Quarter	332.8	26.6	54.2	6.1	33 983
Year ended September 2007	1 471.2	29.6	279.8	5.3	151 870
Year ended September 2008	1 491.7	29.9	275.4	5.4	160 484
OTHER LETTING ENTITIES					
2007					
September Quarter	931.8	67.6	312.7	3.0	116 381
December Quarter	942.5	67.7	352.7	2.7	129 565
2008					
March Quarter	894.1	64.8	320.8	2.8	121 825
June Quarter	747.3	53.9	290.2	2.6	90 473
September Quarter	889.7	64.2	305.5	2.9	117 233
Year ended September 2007	3 492.8	64.8	1 212.7	2.9	431 300
Year ended September 2008	3 473.5	62.6	1 269.3	2.7	459 096
HOLIDAY FLATS AND UNITS					
2007					
September Quarter	1 260.5	48.0	372.1	3.4	150 025
December Quarter	1 354.1	51.2	437.1	3.1	176 474
2008					
March Quarter	1 360.2	51.8	404.4	3.4	176 734
June Quarter	1 028.5	39.3	343.4	3.0	115 157
September Quarter	1 222.5	46.3	359.7	3.4	151 216
Year ended September 2007	4 964.0	47.9	1 492.5	3.3	583 170
Year ended September 2008	4 965.2	47.2	1 544.6	3.2	619 580

SUMMARY OF VISITOR HOSTELS(a), Australia

<i>Period</i>	<i>Establishments</i>	<i>Bed spaces</i>	<i>Persons employed</i>	<i>Guest arrivals</i>	<i>Guest nights occupied</i>	<i>Bed occupancy rate</i>	<i>Average length of stay</i>	<i>Takings from accommodation</i>
	no.	no.	no.	no.	no.	%	days	\$'000
2007								
September Quarter	426	47 157	3 354	705 183	2 048 267	47.5	2.9	51 274
December Quarter	424	47 149	3 449	747 728	2 264 705	52.5	3.0	58 703
2008								
March Quarter	415	46 386	3 391	824 970	2 399 726	57.2	2.9	62 546
June Quarter	414	46 671	3 340	751 195	2 125 826	50.1	2.8	54 057
September Quarter	413	46 175	3 394	763 615	2 214 908	52.2	2.9	59 754
Year ended September 2007	3 033 969	8 724 036	51.4	2.9	215 435
Year ended September 2008	3 087 508	9 005 165	53.0	2.9	235 060

.. not applicable

(a) Comprising establishments with 25 or more bed spaces.

STAR GRADING

Period	1	2	3	4	5	Ungraded	Total
--------	---	---	---	---	---	----------	-------

ESTABLISHMENTS, CAPACITY AND EMPLOYMENT (no.)

September Quarter 2007

Establishments	74	304	854	384	16	289	1 921
Rooms	721	2 962	8 823	3 185	122	2 662	18 475
Bed spaces	1 826	8 528	26 169	9 719	265	7 786	54 293
Persons employed	889	2 523	3 826	1 476	79	2 963	11 756

September Quarter 2008

Establishments	75	294	862	380	22	271	1 904
Rooms	717	2 867	8 878	3 175	186	2 524	18 347
Bed spaces	1 792	8 227	26 420	9 721	457	7 253	53 870
Persons employed	950	2 327	3 813	1 445	214	2 581	11 330

ROOM NIGHTS OCCUPIED ('000)

2007

September Quarter	20.5	103.5	399.8	139.1	4.5	100.9	768.3
-------------------	------	-------	-------	-------	-----	-------	-------

2008

July	6.9	34.0	132.5	46.6	2.1	31.7	253.7
August	6.8	33.8	128.0	43.8	2.0	31.1	245.5
September	7.2	33.8	136.0	45.2	2.2	30.7	255.1
September Quarter	20.8	101.7	396.5	135.6	6.3	93.4	754.3

ROOM OCCUPANCY RATE (%)

2007

September Quarter	30.9	38.1	49.5	47.7	40.6	41.4	45.4
-------------------	------	------	------	------	------	------	------

2008

July	31.0	38.3	48.5	48.0	36.6	40.7	44.9
August	30.5	38.1	46.7	45.3	34.9	39.8	43.4
September	33.3	39.3	51.1	47.8	38.7	40.5	46.4
September Quarter	31.6	38.5	48.8	47.0	36.7	40.3	44.9

GUEST NIGHTS OCCUPIED ('000)

2007

September Quarter	31.2	173.0	710.5	298.3	8.5	181.9	1 403.4
-------------------	------	-------	-------	-------	-----	-------	---------

2008

July	9.7	54.8	237.6	104.2	4.1	59.8	470.3
August	9.4	54.4	223.5	94.2	3.9	57.1	442.5
September	9.9	55.6	241.9	100.2	4.2	55.0	466.8
September Quarter	29.0	164.8	703.1	298.6	12.2	171.9	1 379.6

BED OCCUPANCY RATE (%)

2007

September Quarter	18.6	22.1	29.6	33.5	35.6	25.5	28.2
-------------------	------	------	------	------	------	------	------

2008

July	17.5	21.5	29.3	35.0	29.2	26.7	28.4
August	16.9	21.3	27.4	31.7	27.5	25.5	26.6
September	18.4	22.5	30.6	34.5	30.6	25.3	28.9
September Quarter	17.6	21.8	29.1	33.7	29.0	25.8	28.0

continued

	STAR GRADING						
Period	1	2	3	4	5	Ungraded	Total
GUEST ARRIVALS ('000)							
2007							
September Quarter	19.6	104.4	428.8	133.9	4.5	95.4	786.7
2008							
July	5.5	32.7	140.6	42.5	2.3	29.9	253.3
August	5.2	32.1	132.8	39.7	2.3	28.6	240.6
September	5.5	33.1	144.1	42.9	2.2	27.3	255.0
September Quarter	16.2	97.8	417.4	125.0	6.8	85.8	748.9
AVERAGE LENGTH OF STAY (days)							
2007							
September Quarter	1.6	1.7	1.7	2.2	1.9	1.9	1.8
2008							
July	1.8	1.7	1.7	2.5	1.8	2.0	1.9
August	1.8	1.7	1.7	2.4	1.7	2.0	1.8
September	1.8	1.7	1.7	2.3	1.9	2.0	1.8
September Quarter	1.8	1.7	1.7	2.4	1.8	2.0	1.8
TAKINGS FROM ACCOMMODATION (\$'000)							
2007							
September Quarter	1 110	7 063	33 564	20 574	1 137	9 994	73 442
2008							
July	391	2 353	12 011	7 240	499	3 448	25 943
August	387	2 422	11 846	6 765	498	3 540	25 458
September	385	2 373	12 268	6 890	544	2 994	25 453
September Quarter	1 163	7 149	36 125	20 895	1 541	9 981	76 854
AVERAGE TAKINGS PER ROOM NIGHT OCCUPIED (\$)							
2007							
September Quarter	54.22	68.24	83.96	147.88	252.01	99.01	95.58
2008							
July	56.79	69.20	90.66	155.45	236.35	108.84	102.24
August	57.16	71.61	92.55	154.51	247.32	114.00	103.72
September	53.69	70.14	90.20	152.40	252.43	97.50	99.79
September Quarter	55.84	70.32	91.11	154.13	245.39	106.83	101.89
AVERAGE TAKINGS PER ROOM NIGHT AVAILABLE (\$)							
2007							
September Quarter	16.74	25.99	41.52	70.47	102.43	40.95	43.37
2008							
July	17.61	26.48	44.00	74.69	86.49	44.27	45.94
August	17.42	27.25	43.24	70.04	86.34	45.37	45.03
September	17.88	27.59	46.11	72.82	97.58	39.53	46.32
September Quarter	17.63	27.10	44.44	72.52	90.06	43.09	45.76

STAR GRADING

Period	1	2	3	4	5	Ungraded	Total
--------	---	---	---	---	---	----------	-------

ESTABLISHMENTS, CAPACITY AND EMPLOYMENT (no.)

September Quarter 2007

Establishments	53	284	2 086	1 464	113	220	4 220
Rooms	1 600	8 676	75 992	100 471	23 432	6 674	216 845
Bed spaces	5 333	24 754	222 392	291 364	58 237	18 689	620 769
Persons employed	572	3 349	26 463	49 520	32 326	3 209	115 439

September Quarter 2008

Establishments	49	284	2 147	1 459	120	208	4 267
Rooms	1 453	8 977	77 001	103 892	24 516	6 427	222 266
Bed spaces	4 869	25 614	223 732	299 944	62 392	17 844	634 395
Persons employed	528	3 333	25 832	50 031	34 036	3 239	116 999

ROOM NIGHTS OCCUPIED ('000)

2007

September Quarter	64.3	427.9	4 220.7	6 668.4	1 676.5	323.0	13 380.7
-------------------	------	-------	---------	---------	---------	-------	----------

2008

July	19.5	149.2	1 399.5	2 249.4	552.2	108.2	4 477.9
August	19.2	144.4	1 373.2	2 222.8	561.0	108.3	4 428.8
September	15.3	141.7	1 403.8	2 172.4	531.3	102.3	4 366.8
September Quarter	54.0	435.2	4 176.5	6 644.6	1 644.5	318.8	13 273.6

ROOM OCCUPANCY RATE (%)

2007

September Quarter	43.7	53.6	60.5	72.2	77.8	52.6	67.1
-------------------	------	------	------	------	------	------	------

2008

July	43.6	53.6	58.7	69.9	72.7	54.3	65.0
August	43.1	51.9	57.6	69.1	73.8	54.3	64.3
September	35.1	52.8	60.9	69.8	72.2	53.1	65.6
September Quarter	40.7	52.8	59.0	69.6	72.9	53.9	65.0

GUEST NIGHTS OCCUPIED ('000)

2007

September Quarter	148.1	751.0	7 591.2	11 727.8	2 609.7	545.1	23 372.8
-------------------	-------	-------	---------	----------	---------	-------	----------

2008

July	49.8	274.8	2 538.7	4 051.4	875.6	182.7	7 972.9
August	47.3	253.1	2 405.8	3 859.3	880.4	180.1	7 626.0
September	31.0	243.9	2 475.1	3 835.1	823.0	169.7	7 577.9
September Quarter	128.1	771.9	7 419.6	11 745.7	2 579.0	532.4	23 176.8

BED OCCUPANCY RATE (%)

2007

September Quarter	30.2	33.0	37.2	43.8	48.7	31.7	41.0
-------------------	------	------	------	------	------	------	------

2008

July	33.2	34.6	36.6	43.6	45.3	33.0	40.6
August	31.6	31.9	34.7	41.6	45.5	32.6	38.8
September	21.2	32.0	36.9	42.7	44.0	31.7	39.9
September Quarter	28.7	32.8	36.1	42.6	44.9	32.4	39.7

	STAR GRADING						
Period	1	2	3	4	5	Ungraded	Total
GUEST ARRIVALS ('000)							
2007							
September Quarter	71.5	440.3	3 787.6	4 861.9	1 091.0	231.1	10 483.5
2008							
July	19.6	145.2	1 244.9	1 626.1	350.0	71.9	3 457.7
August	18.8	135.4	1 211.3	1 603.5	365.1	71.3	3 405.4
September	16.3	136.3	1 243.4	1 576.0	339.3	69.7	3 380.8
September Quarter	54.6	416.8	3 699.6	4 805.6	1 054.4	212.8	10 243.9
AVERAGE LENGTH OF STAY (days)							
2007							
September Quarter	2.1	1.7	2.0	2.4	2.4	2.4	2.2
2008							
July	2.5	1.9	2.0	2.5	2.5	2.5	2.3
August	2.5	1.9	2.0	2.4	2.4	2.5	2.2
September	1.9	1.8	2.0	2.4	2.4	2.4	2.2
September Quarter	2.3	1.9	2.0	2.4	2.4	2.5	2.3
TAKINGS FROM ACCOMMODATION (\$'000)							
2007							
September Quarter	4 831	34 659	450 694	1 020 398	390 641	41 359	1 942 581
2008							
July	1 858	13 349	156 406	362 651	131 074	14 335	679 673
August	2 019	12 899	152 121	361 024	134 111	14 421	676 595
September	1 431	12 087	154 067	352 039	126 307	12 554	658 484
September Quarter	5 307	38 335	462 594	1 075 714	391 492	41 310	2 014 752
AVERAGE TAKINGS PER ROOM NIGHT OCCUPIED (\$)							
2007							
September Quarter	75.15	81.00	106.78	153.02	233.01	128.06	145.18
2008							
July	95.52	89.50	111.76	161.22	237.37	132.46	151.78
August	104.97	89.34	110.78	162.42	239.06	133.22	152.77
September	93.49	85.29	109.75	162.05	237.72	122.68	150.79
September Quarter	98.31	88.08	110.76	161.89	238.06	129.58	151.79
AVERAGE TAKINGS PER ROOM NIGHT AVAILABLE (\$)							
2007							
September Quarter	32.82	43.44	64.57	110.45	181.29	67.36	97.46
2008							
July	41.68	47.97	65.58	112.64	172.53	71.95	98.70
August	45.29	46.35	63.78	112.20	176.46	72.38	98.27
September	32.82	45.02	66.80	113.06	171.73	65.11	98.87
September Quarter	39.98	46.46	65.37	112.63	173.60	69.86	98.61

STAR GRADING

Period	1	2	3	4	5	Ungraded	Total
--------	---	---	---	---	---	----------	-------

ESTABLISHMENTS, CAPACITY AND EMPLOYMENT (no.)

September Quarter 2007

Establishments	127	588	2 940	1 848	129	509	6 141
Rooms	2 321	11 638	84 815	103 656	23 554	9 336	235 320
Bed spaces	7 159	33 282	248 561	301 083	58 502	26 475	675 062
Persons employed	1 461	5 872	30 289	50 996	32 405	6 172	127 195

September Quarter 2008

Establishments	124	578	3 009	1 839	142	479	6 171
Rooms	2 170	11 844	85 879	107 067	24 702	8 951	240 613
Bed spaces	6 661	33 841	250 152	309 665	62 849	25 097	688 265
Persons employed	1 478	5 660	29 645	51 476	34 250	5 820	128 329

ROOM NIGHTS OCCUPIED ('000)

2007

September Quarter	84.8	531.4	4 620.5	6 807.5	1 681.0	423.9	14 149.1
-------------------	------	-------	---------	---------	---------	-------	----------

2008

July	26.3	183.2	1 532.0	2 296.0	554.3	139.9	4 731.7
August	26.0	178.2	1 501.2	2 266.6	563.0	139.3	4 674.3
September	22.5	175.5	1 539.8	2 217.6	533.5	133.0	4 621.9
September Quarter	74.8	536.9	4 573.0	6 780.1	1 650.8	412.2	14 027.8

ROOM OCCUPANCY RATE (%)

2007

September Quarter	39.7	49.7	59.3	71.4	77.6	49.4	65.4
-------------------	------	------	------	------	------	------	------

2008

July	39.4	49.9	57.6	69.2	72.4	50.5	63.5
August	38.9	48.5	56.5	68.4	73.5	50.2	62.7
September	34.5	49.5	59.9	69.1	72.0	49.5	64.1
September Quarter	37.7	49.3	58.0	68.9	72.6	50.1	63.4

GUEST NIGHTS OCCUPIED ('000)

2007

September Quarter	179.2	924.0	8 301.7	12 026.1	2 618.2	727.0	24 776.2
-------------------	-------	-------	---------	----------	---------	-------	----------

2008

July	59.5	329.7	2 776.3	4 155.6	879.7	242.4	8 443.2
August	56.7	307.5	2 629.4	3 953.4	884.3	237.2	8 068.5
September	40.9	299.5	2 717.1	3 935.3	827.2	224.6	8 044.6
September Quarter	157.1	936.7	8 122.7	12 044.3	2 591.2	704.3	24 556.4

BED OCCUPANCY RATE (%)

2007

September Quarter	27.2	30.2	36.4	43.4	48.7	29.9	39.9
-------------------	------	------	------	------	------	------	------

2008

July	29.0	31.4	35.9	43.3	45.2	31.2	39.6
August	27.6	29.3	33.9	41.3	45.4	30.5	37.9
September	20.5	29.7	36.3	42.4	43.9	29.8	39.0
September Quarter	25.7	30.1	35.3	42.3	44.8	30.5	38.8

	STAR GRADING						
Period	1	2	3	4	5	Ungraded	Total
GUEST ARRIVALS ('000)							
2007							
September Quarter	91.1	544.8	4 216.5	4 995.8	1 095.5	326.5	11 270.2
2008							
July	25.0	177.8	1 385.5	1 668.6	352.3	101.8	3 711.0
August	24.1	167.5	1 344.1	1 643.2	367.4	99.8	3 646.0
September	21.7	169.3	1 387.5	1 618.8	341.5	97.0	3 635.8
September Quarter	70.8	514.6	4 117.0	4 930.6	1 061.1	298.6	10 992.8
AVERAGE LENGTH OF STAY (days)							
2007							
September Quarter	2.0	1.7	2.0	2.4	2.4	2.2	2.2
2008							
July	2.4	1.9	2.0	2.5	2.5	2.4	2.3
August	2.4	1.8	2.0	2.4	2.4	2.4	2.2
September	1.9	1.8	2.0	2.4	2.4	2.3	2.2
September Quarter	2.2	1.8	2.0	2.4	2.4	2.4	2.2
TAKINGS FROM ACCOMMODATION (\$'000)							
2007							
September Quarter	5 941	41 722	484 259	1 040 971	391 777	51 353	2 016 023
2008							
July	2 249	15 702	168 418	369 892	131 573	17 782	705 616
August	2 406	15 321	163 967	367 789	134 609	17 961	702 053
September	1 815	14 460	166 335	358 928	126 851	15 547	683 937
September Quarter	6 471	45 483	498 719	1 096 608	393 033	51 291	2 091 606
AVERAGE TAKINGS PER ROOM NIGHT OCCUPIED (\$)							
2007							
September Quarter	70.10	78.52	104.81	152.91	233.06	121.14	142.48
2008							
July	85.39	85.73	109.94	161.10	237.36	127.11	149.13
August	92.52	85.98	109.23	162.27	239.09	128.93	150.20
September	80.80	82.37	108.02	161.86	237.78	116.87	147.98
September Quarter	86.49	84.71	109.06	161.74	238.09	124.42	149.10
AVERAGE TAKINGS PER ROOM NIGHT AVAILABLE (\$)							
2007							
September Quarter	27.82	39.01	62.18	109.22	180.89	59.85	93.22
2008							
July	33.67	42.77	63.36	111.53	171.88	64.17	94.70
August	36.02	41.73	61.66	110.98	175.78	64.78	94.23
September	27.89	40.79	64.66	111.87	171.18	57.90	94.86
September Quarter	32.56	41.77	63.21	111.46	172.97	62.33	94.60

Period	New South Wales	Victoria	Queensland	South Australia	Western Australia	Tasmania	Northern Territory	Australian Capital Territory	Australia
ESTABLISHMENTS (no.)									
2007									
September Quarter	612	461	424	143	142	125	12	2	1 921
December Quarter	613	462	426	142	144	124	12	2	1 925
2008									
March Quarter	617	459	427	144	147	123	11	3	1 931
June Quarter	612	459	427	142	146	124	12	3	1 925
September Quarter	606	455	419	141	143	121	16	3	1 904
ROOMS (no.)									
2007									
September Quarter	6 050	4 417	4 228	1 378	1 218	np	130	np	18 475
December Quarter	6 031	4 445	4 236	1 359	1 219	1 031	np	np	18 470
2008									
March Quarter	6 087	4 445	4 244	1 381	1 252	1 013	np	np	18 570
June Quarter	6 055	4 459	4 241	1 370	1 247	np	127	np	18 563
September Quarter	6 010	4 416	4 155	1 341	1 221	1 021	153	30	18 347
BED SPACES (no.)									
2007									
September Quarter	17 542	12 671	13 240	3 643	3 905	np	378	np	54 293
December Quarter	17 441	12 865	13 292	3 571	3 875	2 872	np	np	54 344
2008									
March Quarter	17 537	12 839	13 359	3 561	4 002	2 783	np	np	54 506
June Quarter	17 513	12 796	13 355	3 518	3 885	np	362	np	54 337
September Quarter	17 383	12 743	13 065	3 482	3 860	2 818	434	85	53 870
PERSONS EMPLOYED (no.)									
2007									
September Quarter	3 135	2 555	2 350	1 842	982	np	52	np	11 756
December Quarter	3 182	2 640	2 261	1 850	1 003	814	np	np	11 812
2008									
March Quarter	3 139	2 629	2 190	1 856	1 015	858	np	np	11 750
June Quarter	3 062	2 613	2 149	1 847	1 006	np	58	np	11 590
September Quarter	3 004	2 529	2 101	1 845	949	800	82	20	11 330
ROOM NIGHTS OCCUPIED ('000)									
2007									
September Quarter	240.7	153.7	234.9	47.2	53.2	np	6.9	np	768.3
December Quarter	242.1	173.2	213.5	50.8	55.8	45.2	np	np	787.6
2008									
March Quarter	244.4	182.3	190.8	51.8	57.0	56.4	np	np	788.3
June Quarter	226.2	155.9	203.6	45.5	53.4	np	5.4	np	728.7
September Quarter	234.2	154.4	227.4	45.8	53.4	30.6	7.0	1.6	754.3
ROOM OCCUPANCY RATE (%)									
2007									
September Quarter	43.4	38.0	60.4	37.3	47.9	np	57.8	np	45.4
December Quarter	44.1	42.5	54.9	40.7	49.9	47.7	np	np	46.6
2008									
March Quarter	44.2	45.4	49.6	41.3	50.7	61.6	np	np	46.9
June Quarter	41.6	38.7	52.9	36.6	47.3	np	49.3	np	43.5
September Quarter	42.6	38.2	59.5	37.4	48.0	32.9	49.4	57.5	44.9

np not available for publication but included in totals where applicable, unless otherwise indicated

<i>Period</i>	<i>New South Wales</i>	<i>Victoria</i>	<i>Queensland</i>	<i>South Australia</i>	<i>Western Australia</i>	<i>Tasmania</i>	<i>Northern Territory</i>	<i>Australian Capital Territory</i>	<i>Australia</i>
GUEST NIGHTS OCCUPIED ('000)									
2007									
September Quarter	445.2	277.1	429.2	77.5	105.1	np	13.7	np	1 403.4
December Quarter	447.9	318.7	398.8	83.5	115.7	86.9	np	np	1 461.6
2008									
March Quarter	460.7	348.8	363.2	85.9	121.6	113.7	np	np	1 502.0
June Quarter	400.7	275.3	369.8	72.4	105.5	np	8.7	np	1 301.1
September Quarter	428.3	280.7	421.9	73.4	106.6	55.4	11.3	2.1	1 379.6
BED OCCUPANCY RATE (%)									
2007									
September Quarter	27.7	23.9	35.2	23.2	29.6	np	39.3	np	28.2
December Quarter	28.2	27.0	32.7	25.5	32.6	32.9	np	np	29.4
2008									
March Quarter	29.0	30.1	30.0	26.5	33.8	45.2	np	np	30.4
June Quarter	25.5	23.8	30.5	22.6	30.0	np	28.2	np	26.5
September Quarter	26.9	24.1	35.1	23.1	30.3	21.6	28.3	26.3	28.0
GUEST ARRIVALS ('000)									
2007									
September Quarter	265.4	172.6	211.6	45.9	51.8	np	9.3	np	786.7
December Quarter	258.8	201.6	197.2	48.6	57.0	48.2	np	np	817.3
2008									
March Quarter	254.0	209.9	178.0	47.6	54.6	69.7	np	np	819.2
June Quarter	226.1	171.5	182.5	41.3	49.8	np	5.5	np	718.9
September Quarter	244.3	172.7	202.0	42.5	46.3	32.8	7.0	1.3	748.9
AVERAGE LENGTH OF STAY (days)									
2007									
September Quarter	1.7	1.6	2.0	1.7	2.0	np	1.5	np	1.8
December Quarter	1.7	1.6	2.0	1.7	2.0	1.8	np	np	1.8
2008									
March Quarter	1.8	1.7	2.0	1.8	2.2	1.6	np	np	1.8
June Quarter	1.8	1.6	2.0	1.8	2.1	np	1.6	np	1.8
September Quarter	1.8	1.6	2.1	1.7	2.3	1.7	1.6	1.6	1.8
TAKINGS FROM ACCOMMODATION (\$'000)									
2007									
September Quarter	24 022	14 688	20 574	3 852	6 334	np	634	np	73 442
December Quarter	23 894	16 888	19 551	4 358	6 938	5 316	np	np	77 467
2008									
March Quarter	24 426	18 933	17 613	4 505	7 621	6 825	np	np	80 407
June Quarter	20 899	15 035	18 516	3 844	6 700	np	554	np	69 914
September Quarter	24 230	15 540	21 536	3 797	7 055	3 335	1 244	117	76 854
AVERAGE TAKINGS PER ROOM NIGHT OCCUPIED (\$)									
2007									
September Quarter	99.79	95.56	87.57	81.59	119.17	np	91.66	np	95.58
December Quarter	98.69	97.53	91.57	85.75	124.37	117.72	np	np	98.36
2008									
March Quarter	99.93	103.86	92.33	86.99	133.72	121.10	np	np	102.00
June Quarter	92.37	96.41	90.94	84.44	125.56	np	102.72	np	95.94
September Quarter	103.45	100.67	94.73	82.89	132.10	109.10	178.85	73.73	101.89

np not available for publication but included in totals where applicable, unless otherwise indicated

<i>Period</i>	<i>New South Wales</i>	<i>Victoria</i>	<i>Queensland</i>	<i>South Australia</i>	<i>Western Australia</i>	<i>Tasmania</i>	<i>Northern Territory</i>	<i>Australian Capital Territory</i>	<i>Australia</i>
AVERAGE TAKINGS PER ROOM NIGHT AVAILABLE (\$)									
2007									
September Quarter	43.31	36.27	52.89	30.46	57.09	np	53.01	np	43.37
December Quarter	43.49	41.47	50.26	34.93	62.04	56.11	np	np	45.82
2008									
March Quarter	44.15	47.18	45.82	35.89	67.76	74.57	np	np	47.82
June Quarter	38.42	37.30	48.13	30.88	59.36	np	50.62	np	41.70
September Quarter	44.09	38.43	56.34	31.03	63.36	35.90	88.38	42.40	45.76

np not available for publication but included in totals where applicable, unless otherwise indicated

<i>Period</i>	<i>New South Wales</i>	<i>Victoria</i>	<i>Queensland</i>	<i>South Australia</i>	<i>Western Australia</i>	<i>Tasmania</i>	<i>Northern Territory</i>	<i>Australian Capital Territory</i>	<i>Australia</i>
ESTABLISHMENTS (no.)									
2007									
September Quarter	1 421	795	1 100	253	349	154	92	56	4 220
December Quarter	1 427	796	1 104	255	352	155	91	55	4 235
2008									
March Quarter	1 427	797	1 118	254	350	157	92	55	4 250
June Quarter	1 436	805	1 116	257	350	157	91	54	4 266
September Quarter	1 434	801	1 117	257	352	155	95	56	4 267
ROOMS (no.)									
2007									
September Quarter	68 986	37 742	59 257	11 564	21 172	6 466	6 710	4 948	216 845
December Quarter	69 697	37 835	59 592	11 732	21 359	6 572	6 587	4 943	218 317
2008									
March Quarter	70 292	37 963	60 579	11 707	21 460	6 623	6 603	5 076	220 303
June Quarter	71 033	38 464	60 422	11 861	21 561	6 598	6 584	5 044	221 567
September Quarter	71 025	38 466	60 655	11 831	21 527	6 583	7 025	5 154	222 266
BED SPACES (no.)									
2007									
September Quarter	192 495	103 552	182 166	31 606	57 510	18 549	20 269	14 622	620 769
December Quarter	194 274	103 048	184 355	31 948	57 935	18 763	19 985	14 443	624 751
2008									
March Quarter	194 780	103 803	186 198	32 075	57 720	18 696	19 727	14 953	627 952
June Quarter	196 653	105 749	186 318	32 371	57 950	18 600	19 764	14 797	632 202
September Quarter	196 503	105 296	188 168	32 414	57 990	18 453	20 435	15 136	634 395
PERSONS EMPLOYED (no.)									
2007									
September Quarter	33 549	21 783	32 296	7 193	10 714	4 489	3 107	2 308	115 439
December Quarter	33 643	22 022	32 669	7 242	10 757	4 627	2 895	2 382	116 237
2008									
March Quarter	33 497	21 918	32 251	7 183	11 201	4 656	2 941	2 518	116 165
June Quarter	33 608	21 979	32 396	7 171	11 319	4 509	3 079	2 568	116 629
September Quarter	33 670	21 903	32 473	7 290	11 189	4 640	3 253	2 581	116 999
ROOM NIGHTS OCCUPIED ('000)									
2007									
September Quarter	4 055.3	2 207.0	3 949.0	669.0	1 378.2	290.3	482.2	349.8	13 380.7
December Quarter	4 158.5	2 268.4	3 745.1	706.1	1 387.7	387.6	388.0	317.9	13 359.4
2008									
March Quarter	4 170.0	2 303.7	3 366.3	699.5	1 354.7	446.1	331.3	309.7	12 981.2
June Quarter	3 853.0	2 196.6	3 380.5	657.6	1 319.4	321.9	413.2	331.8	12 474.1
September Quarter	4 045.5	2 216.6	3 873.6	665.6	1 353.2	286.1	505.3	327.8	13 273.6
Year ended September 2007	15 923.9	8 877.5	14 376.0	2 713.3	5 312.9	1 396.8	1 559.0	1 344.3	51 503.8
Year ended September 2008	16 227.0	8 985.2	14 365.5	2 728.7	5 415.1	1 441.7	1 637.8	1 287.2	52 088.2

Period	New South Wales	Victoria	Queensland	South Australia	Western Australia	Tasmania	Northern Territory	Australian Capital Territory	Australia
ROOM OCCUPANCY RATE (%)									
2007									
September Quarter	64.0	63.7	72.5	62.9	70.8	48.8	78.1	76.8	67.1
December Quarter	65.3	65.8	68.3	65.4	70.6	64.1	64.0	69.9	66.8
2008									
March Quarter	65.7	67.5	61.4	65.7	69.6	74.3	55.3	67.1	65.2
June Quarter	60.1	63.0	61.5	61.0	67.5	53.7	69.0	72.3	62.1
September Quarter	61.9	62.7	69.6	61.1	68.4	47.2	78.2	69.1	65.0
Year ended September 2007	63.9	65.1	67.5	64.0	69.1	58.6	64.4	73.9	65.7
Year ended September 2008	63.2	64.7	65.2	63.3	69.0	59.8	66.8	69.6	64.8
GUEST NIGHTS OCCUPIED ('000)									
2007									
September Quarter	6 905.2	3 705.0	7 547.7	1 058.0	2 231.7	498.8	839.0	587.3	23 372.8
December Quarter	7 109.5	3 821.6	7 371.7	1 144.6	2 302.4	711.5	633.6	525.1	23 620.1
2008									
March Quarter	7 314.3	3 917.3	6 629.7	1 139.4	2 266.7	860.7	558.8	491.3	23 178.2
June Quarter	6 310.2	3 537.7	6 176.5	1 019.9	2 070.9	559.7	684.3	526.5	20 885.7
September Quarter	6 943.4	3 716.5	7 407.7	1 050.0	2 156.7	508.5	852.2	541.9	23 176.8
Year ended September 2007	27 371.0	14 911.2	27 818.8	4 393.8	8 805.8	2 503.9	2 677.0	2 185.7	90 667.1
Year ended September 2008	27 677.4	14 993.2	27 585.6	4 354.0	8 796.6	2 640.3	2 728.8	2 084.9	90 860.8
BED OCCUPANCY RATE (%)									
2007									
September Quarter	39.0	39.0	45.1	36.4	42.2	29.3	45.0	43.7	41.0
December Quarter	40.0	40.7	43.5	38.9	43.2	41.2	34.5	39.5	41.2
2008									
March Quarter	41.7	42.2	39.3	39.0	43.3	50.8	31.3	36.1	40.9
June Quarter	35.6	37.0	36.4	34.7	39.4	33.1	38.0	39.1	36.5
September Quarter	38.4	38.4	42.9	35.2	40.5	30.0	45.3	38.9	39.7
Year ended September 2007	39.2	40.1	42.3	37.9	42.0	36.5	36.3	40.4	40.3
Year ended September 2008	38.9	39.5	40.5	37.0	41.6	38.8	37.4	38.4	39.6
GUEST ARRIVALS ('000)									
2007									
September Quarter	3 390.3	1 744.6	2 868.9	549.2	925.2	264.2	456.2	284.9	10 483.5
December Quarter	3 576.3	1 889.1	2 766.8	588.6	970.1	389.0	340.7	234.7	10 755.3
2008									
March Quarter	3 358.0	1 787.8	2 421.3	552.6	869.3	462.3	289.6	216.2	9 957.0
June Quarter	3 143.5	1 732.7	2 415.1	515.1	858.1	298.3	306.8	250.9	9 520.6
September Quarter	3 372.6	1 753.1	2 761.6	536.7	902.9	262.6	392.7	261.6	10 243.9
Year ended September 2007	13 301.4	6 920.9	10 573.9	2 184.8	3 526.4	1 315.0	1 362.3	969.9	40 154.5
Year ended September 2008	13 450.5	7 162.7	10 364.9	2 193.0	3 600.4	1 412.2	1 329.7	963.4	40 476.7

<i>Period</i>	<i>New South Wales</i>	<i>Victoria</i>	<i>Queensland</i>	<i>South Australia</i>	<i>Western Australia</i>	<i>Tasmania</i>	<i>Northern Territory</i>	<i>Australian Capital Territory</i>	<i>Australia</i>
AVERAGE LENGTH OF STAY (days)									
2007									
September Quarter	2.0	2.1	2.6	1.9	2.4	1.9	1.8	2.1	2.2
December Quarter	2.0	2.0	2.7	1.9	2.4	1.8	1.9	2.2	2.2
2008									
March Quarter	2.2	2.2	2.7	2.1	2.6	1.9	1.9	2.3	2.3
June Quarter	2.0	2.0	2.6	2.0	2.4	1.9	2.2	2.1	2.2
September Quarter	2.1	2.1	2.7	2.0	2.4	1.9	2.2	2.1	2.3
Year ended September 2007	2.1	2.2	2.6	2.0	2.5	1.9	2.0	2.3	2.3
Year ended September 2008	2.1	2.1	2.7	2.0	2.4	1.9	2.1	2.2	2.2
TAKINGS FROM ACCOMMODATION (\$'000)									
2007									
September Quarter	615 632	336 516	560 050	80 111	191 220	34 890	73 642	50 520	1 942 581
December Quarter	650 192	353 183	552 210	89 674	207 320	50 254	52 242	45 558	2 000 634
2008									
March Quarter	672 035	378 521	498 659	93 220	205 741	59 952	42 683	48 961	1 999 773
June Quarter	580 081	341 596	465 546	84 010	208 525	39 958	60 458	58 128	1 838 302
September Quarter	626 107	349 072	565 580	86 415	213 468	35 451	86 176	52 482	2 014 752
Year ended September 2007	2 387 418	1 317 505	1 979 463	324 938	721 898	175 459	212 268	189 702	7 308 651
Year ended September 2008	2 528 415	1 422 372	2 081 995	353 320	835 055	185 615	241 559	205 130	7 853 462
AVERAGE TAKINGS PER ROOM NIGHT OCCUPIED (\$)									
2007									
September Quarter	151.81	152.48	141.82	119.75	138.75	120.17	152.74	144.43	145.18
December Quarter	156.35	155.70	147.45	127.01	149.39	129.64	134.64	143.31	149.75
2008									
March Quarter	161.16	164.31	148.13	133.27	151.87	134.39	128.82	158.12	154.05
June Quarter	150.55	155.51	137.71	127.76	158.04	124.15	146.31	175.18	147.37
September Quarter	154.77	157.48	146.01	129.84	157.75	123.91	170.56	160.11	151.79
Year ended September 2007	149.93	148.41	137.69	119.76	135.88	125.61	136.15	141.12	141.91
Year ended September 2008	155.82	158.30	144.93	129.48	154.21	128.75	147.49	159.37	150.77
AVERAGE TAKINGS PER ROOM NIGHT AVAILABLE (\$)									
2007									
September Quarter	97.12	97.09	102.78	75.33	98.17	58.69	119.29	110.98	97.46
December Quarter	102.08	102.43	100.74	83.08	105.51	83.12	86.21	100.18	99.99
2008									
March Quarter	105.91	110.98	90.92	87.52	105.67	99.84	71.26	106.07	100.42
June Quarter	90.50	97.96	84.70	77.97	106.66	66.67	100.91	126.64	91.53
September Quarter	95.83	98.67	101.58	79.39	107.93	58.53	133.34	110.68	98.61
Year ended September 2007	95.73	96.58	92.90	76.66	93.83	73.60	87.65	104.24	93.17
Year ended September 2008	98.54	102.45	94.50	81.97	106.45	77.02	98.58	110.91	97.63

Period	New South Wales	Victoria	Queensland	South Australia	Western Australia	Tasmania	Northern Territory	Australian Capital Territory	Australia
ESTABLISHMENTS (no.)									
2007									
September Quarter	2 033	1 256	1 524	396	491	279	104	58	6 141
December Quarter	2 040	1 258	1 530	397	496	279	103	57	6 160
2008									
March Quarter	2 044	1 256	1 545	398	497	280	103	58	6 181
June Quarter	2 048	1 264	1 543	399	496	281	103	57	6 191
September Quarter	2 040	1 256	1 536	398	495	276	111	59	6 171
ROOMS (no.)									
2007									
September Quarter	75 036	42 159	63 485	12 942	22 390	np	6 840	np	235 320
December Quarter	75 728	42 280	63 828	13 091	22 578	7 603	np	np	236 787
2008									
March Quarter	76 379	42 408	64 823	13 088	22 712	7 636	np	np	238 873
June Quarter	77 088	42 923	64 663	13 231	22 808	np	6 711	np	240 130
September Quarter	77 035	42 882	64 810	13 172	22 748	7 604	7 178	5 184	240 613
BED SPACES (no.)									
2007									
September Quarter	210 037	116 223	195 406	35 249	61 415	np	20 647	np	675 062
December Quarter	211 715	115 913	197 647	35 519	61 810	21 635	np	np	679 095
2008									
March Quarter	212 317	116 642	199 557	35 636	61 722	21 479	np	np	682 458
June Quarter	214 166	118 545	199 673	35 889	61 835	np	20 126	np	686 539
September Quarter	213 886	118 039	201 233	35 896	61 850	21 271	20 869	15 221	688 265
PERSONS EMPLOYED (no.)									
2007									
September Quarter	36 684	24 338	34 646	9 035	11 696	np	3 159	np	127 195
December Quarter	36 825	24 662	34 930	9 092	11 760	5 441	np	np	128 049
2008									
March Quarter	36 636	24 547	34 441	9 039	12 216	5 514	np	np	127 915
June Quarter	36 670	24 592	34 545	9 018	12 325	np	3 137	np	128 219
September Quarter	36 674	24 432	34 574	9 135	12 138	5 440	3 335	2 601	128 329
ROOM NIGHTS OCCUPIED ('000)									
2007									
September Quarter	4 296.0	2 360.7	4 183.9	716.2	1 431.3	np	489.1	np	14 149.1
December Quarter	4 400.6	2 441.5	3 958.6	756.9	1 443.5	432.8	np	np	14 147.0
2008									
March Quarter	4 414.4	2 486.0	3 557.0	751.3	1 411.7	502.5	np	np	13 769.5
June Quarter	4 079.3	2 352.5	3 584.1	703.1	1 372.8	np	418.6	np	13 202.8
September Quarter	4 279.7	2 370.9	4 100.9	711.4	1 406.6	316.7	512.2	329.4	14 027.8
ROOM OCCUPANCY RATE (%)									
2007									
September Quarter	62.3	61.0	71.7	60.2	69.5	np	77.7	np	65.4
December Quarter	63.6	63.3	67.4	62.9	69.5	61.9	np	np	65.2
2008									
March Quarter	64.0	65.2	60.6	63.1	68.5	72.6	np	np	63.8
June Quarter	58.7	60.5	60.9	58.5	66.4	np	68.6	np	60.7
September Quarter	60.4	60.1	68.9	58.8	67.3	45.3	77.6	69.1	63.4

np not available for publication but included in totals where applicable, unless otherwise indicated

<i>Period</i>	<i>New South Wales</i>	<i>Victoria</i>	<i>Queensland</i>	<i>South Australia</i>	<i>Western Australia</i>	<i>Tasmania</i>	<i>Northern Territory</i>	<i>Australian Capital Territory</i>	<i>Australia</i>
GUEST NIGHTS OCCUPIED ('000)									
2007									
September Quarter	7 350.4	3 982.2	7 976.9	1 135.5	2 336.8	np	852.7	np	24 776.2
December Quarter	7 557.3	4 140.4	7 770.5	1 228.1	2 418.1	798.4	np	np	25 081.8
2008									
March Quarter	7 775.0	4 266.2	6 992.9	1 225.3	2 388.3	974.4	np	np	24 680.2
June Quarter	6 710.9	3 813.0	6 546.3	1 092.3	2 176.4	np	692.9	np	22 186.8
September Quarter	7 371.7	3 997.2	7 829.5	1 123.5	2 263.2	563.8	863.4	544.0	24 556.4
BED OCCUPANCY RATE (%)									
2007									
September Quarter	38.1	37.3	44.4	35.0	41.4	np	44.9	np	39.9
December Quarter	39.1	39.2	42.7	37.6	42.5	40.1	np	np	40.3
2008									
March Quarter	40.6	40.9	38.7	37.8	42.7	50.0	np	np	40.1
June Quarter	34.8	35.5	36.0	33.5	38.8	np	37.9	np	35.7
September Quarter	37.5	36.8	42.4	34.0	39.9	28.9	45.0	38.8	38.8
GUEST ARRIVALS ('000)									
2007									
September Quarter	3 655.7	1 917.3	3 080.4	595.1	977.0	np	465.5	np	11 270.2
December Quarter	3 835.1	2 090.7	2 964.0	637.2	1 027.1	437.2	np	np	11 572.5
2008									
March Quarter	3 612.0	1 997.7	2 599.2	600.2	923.9	532.0	np	np	10 776.2
June Quarter	3 369.6	1 904.3	2 597.7	556.4	907.9	np	312.2	np	10 239.5
September Quarter	3 616.9	1 925.8	2 963.6	579.3	949.2	295.5	399.7	262.9	10 992.8
AVERAGE LENGTH OF STAY (days)									
2007									
September Quarter	2.0	2.1	2.6	1.9	2.4	np	1.8	np	2.2
December Quarter	2.0	2.0	2.6	1.9	2.4	1.8	np	np	2.2
2008									
March Quarter	2.2	2.1	2.7	2.0	2.6	1.8	np	np	2.3
June Quarter	2.0	2.0	2.5	2.0	2.4	np	2.2	np	2.2
September Quarter	2.0	2.1	2.6	1.9	2.4	1.9	2.2	2.1	2.2
TAKINGS FROM ACCOMMODATION (\$'000)									
2007									
September Quarter	639 654	351 204	580 624	83 963	197 555	np	74 276	np	2 016 023
December Quarter	674 086	370 070	571 760	94 032	214 259	55 570	np	np	2 078 102
2008									
March Quarter	696 461	397 454	516 273	97 724	213 363	66 778	np	np	2 080 180
June Quarter	600 979	356 631	484 062	87 855	215 225	np	61 012	np	1 908 216
September Quarter	650 337	364 612	587 117	90 212	220 524	38 786	87 420	52 599	2 091 606
AVERAGE TAKINGS PER ROOM NIGHT OCCUPIED (\$)									
2007									
September Quarter	148.89	148.77	138.77	117.23	138.02	np	151.87	np	142.48
December Quarter	153.18	151.57	144.43	124.24	148.43	128.40	np	np	146.89
2008									
March Quarter	157.77	159.88	145.14	130.08	151.14	132.90	np	np	151.07
June Quarter	147.32	151.60	135.06	124.95	156.78	np	145.75	np	144.53
September Quarter	151.96	153.78	143.17	126.81	156.77	122.48	170.67	159.69	149.10

np not available for publication but included in totals where applicable, unless otherwise indicated

<i>Period</i>	<i>New South Wales</i>	<i>Victoria</i>	<i>Queensland</i>	<i>South Australia</i>	<i>Western Australia</i>	<i>Tasmania</i>	<i>Northern Territory</i>	<i>Australian Capital Territory</i>	<i>Australia</i>
AVERAGE TAKINGS PER ROOM NIGHT AVAILABLE (\$)									
2007									
September Quarter	92.79	90.72	99.45	70.56	95.96	np	118.03	np	93.22
December Quarter	97.43	95.99	97.40	78.09	103.16	79.46	np	np	95.77
2008									
March Quarter	100.96	104.26	87.96	82.08	103.60	96.50	np	np	96.32
June Quarter	86.42	91.67	82.30	73.09	104.08	np	100.01	np	87.69
September Quarter	91.82	92.49	98.67	74.51	105.56	55.53	132.38	110.29	94.60

np not available for publication but included in totals where applicable, unless otherwise indicated

Period	New South Wales	Victoria	Queensland	South Australia	Western Australia	Tasmania	Northern Territory	Australian Capital Territory	Australia
ESTABLISHMENTS (no.)									
2007									
September Quarter	443	357	255	135	170	47	49	3	1 459
December Quarter	439	356	256	135	171	47	49	3	1 456
2008									
March Quarter	436	356	254	135	171	46	48	3	1 449
June Quarter	437	354	255	134	171	46	49	3	1 449
September Quarter	432	353	255	134	170	45	51	3	1 443
ON-SITE VANS (no.)									
2007									
September Quarter	6 832	2 796	1 606	401	1 243	np	np	np	13 250
December Quarter	7 024	2 489	1 656	405	1 351	np	np	58	13 264
2008									
March Quarter	7 182	2 692	1 626	400	1 376	np	np	58	13 647
June Quarter	7 330	2 437	1 691	415	1 480	np	np	58	13 762
September Quarter	6 920	2 719	1 701	499	1 538	np	np	59	13 870
OTHER POWERED SITES (no.)									
2007									
September Quarter	39 641	32 818	18 762	11 523	14 818	np	np	np	125 290
December Quarter	39 772	33 289	19 051	11 565	14 808	np	np	373	126 223
2008									
March Quarter	39 256	33 164	18 972	11 578	14 760	np	np	373	125 263
June Quarter	39 158	33 019	18 880	11 484	14 770	np	np	373	124 866
September Quarter	38 329	32 770	18 778	11 085	14 814	np	np	373	123 196
UNPOWERED SITES (no.)									
2007									
September Quarter	10 935	9 741	5 546	4 314	3 234	np	np	np	38 749
December Quarter	11 117	9 653	5 633	4 225	3 254	np	np	400	38 884
2008									
March Quarter	11 054	9 669	5 581	4 202	3 286	np	np	400	38 703
June Quarter	11 115	9 531	5 361	4 140	3 272	np	np	400	38 322
September Quarter	10 904	9 496	5 460	4 208	3 234	np	np	400	38 117
CABINS FLATS, UNITS AND VILLAS (no.)									
2007									
September Quarter	10 057	5 125	4 487	2 392	2 561	np	np	np	26 428
December Quarter	9 800	5 005	4 544	2 418	2 682	np	np	105	26 299
2008									
March Quarter	10 006	5 214	4 565	2 451	2 783	np	np	105	26 812
June Quarter	9 920	5 499	4 579	2 474	2 773	np	np	105	27 079
September Quarter	10 334	5 445	4 868	2 498	2 809	np	np	96	27 865
TOTAL CAPACITY (no.)									
2007									
September Quarter	67 465	50 480	30 401	18 630	21 856	np	np	np	203 717
December Quarter	67 713	50 436	30 884	18 613	22 095	np	np	936	204 670
2008									
March Quarter	67 498	50 739	30 744	18 631	22 205	np	np	936	204 425
June Quarter	67 523	50 486	30 511	18 513	22 295	np	np	936	204 029
September Quarter	66 487	50 430	30 807	18 290	22 395	np	np	928	203 048

np not available for publication but included in totals where applicable, unless otherwise indicated

(a) Comprising establishments with 40 or more powered sites and cabins, flats, units and villas.

Period	New South Wales	Victoria	Queensland	South Australia	Western Australia	Tasmania	Northern Territory	Australian Capital Territory	Australia
--------	-----------------	----------	------------	-----------------	-------------------	----------	--------------------	------------------------------	-----------

PERSONS EMPLOYED (no.)

2007									
September Quarter	2 791	1 578	1 468	821	1 153	np	np	np	8 720
December Quarter	3 015	1 746	1 447	824	1 208	np	np	92	9 093
2008									
March Quarter	2 910	1 754	1 444	826	1 228	np	np	84	9 051
June Quarter	2 759	1 688	1 496	733	1 251	np	np	80	8 857
September Quarter	2 822	1 724	1 524	797	1 254	np	np	92	9 110

SITES OCCUPIED BY LONG-TERM GUESTS (no.)

2007									
September Quarter	6 021	2 826	4 980	1 045	3 032	np	np	np	18 924
December Quarter	5 991	2 633	4 808	954	3 161	np	np	155	18 570
2008									
March Quarter	5 877	2 614	4 687	983	3 330	np	np	155	18 382
June Quarter	5 755	2 777	4 895	921	3 325	np	np	155	18 623
September Quarter	5 951	2 844	5 171	919	3 339	np	np	154	19 178

OTHER SITES PERMANENTLY RESERVED (no.)

2007									
September Quarter	19 436	14 815	921	2 148	1 830	np	np	np	40 069
December Quarter	18 620	14 801	918	2 155	1 681	np	np	5	39 122
2008									
March Quarter	19 230	15 313	915	2 120	1 651	np	np	5	40 152
June Quarter	18 764	14 435	858	2 118	1 565	np	np	5	38 686
September Quarter	18 746	14 011	1 049	2 340	1 659	np	np	—	38 679

SITE NIGHTS OCCUPIED ('000)

2007									
September Quarter	3 325.0	1 989.5	1 756.4	587.5	1 103.2	np	np	np	9 332.2
December Quarter	3 529.8	2 265.1	1 321.4	692.4	913.1	np	np	30.0	9 122.4
2008									
March Quarter	3 735.1	2 578.6	1 127.6	754.1	948.0	np	np	31.4	9 535.8
June Quarter	3 226.9	2 044.0	1 423.4	620.7	978.5	np	np	28.4	8 757.8
September Quarter	3 262.2	1 972.9	1 801.3	565.2	1 094.4	np	np	27.5	9 242.7

SITE OCCUPANCY RATE (%)

2007									
September Quarter	53.6	44.7	62.8	34.3	55.0	np	np	np	50.4
December Quarter	56.7	50.1	46.5	40.4	44.9	np	np	34.9	48.8
2008									
March Quarter	60.8	55.9	40.3	44.5	47.0	np	np	36.9	51.3
June Quarter	52.5	45.4	51.3	36.8	48.2	np	np	33.3	47.4
September Quarter	53.3	43.1	63.6	33.6	53.2	np	np	32.2	49.7

— nil or rounded to zero (including null cells)

np not available for publication but included in totals where applicable, unless otherwise indicated

(a) Comprising establishments with 40 or more powered sites and cabins, flats, units and villas.

<i>Period</i>	<i>New South Wales</i>	<i>Victoria</i>	<i>Queensland</i>	<i>South Australia</i>	<i>Western Australia</i>	<i>Tasmania</i>	<i>Northern Territory</i>	<i>Australian Capital Territory</i>	<i>Australia</i>
TAKINGS FROM ACCOMMODATION (\$'000)									
2007									
September Quarter	59 825	29 528	50 491	12 770	29 462	np	np	np	198 294
December Quarter	80 612	40 246	38 331	17 144	25 865	np	np	1 002	213 778
2008									
March Quarter	90 350	49 413	32 862	20 123	28 772	np	np	1 123	234 706
June Quarter	58 681	28 063	41 874	15 283	29 607	np	np	1 063	188 520
September Quarter	62 087	32 491	55 194	13 273	31 666	np	np	1 263	212 042

np not available for publication but included in totals where applicable,
unless otherwise indicated

(a) Comprising establishments with 40 or more powered sites and cabins,
flats, units and villas.

Period	New South Wales	Victoria	Queensland	South Australia	Western Australia	Tasmania	Northern Territory	Australian Capital Territory	Australia
ESTABLISHMENTS (no.)									
2007									
September Quarter	76	44	73	8	26	1	2	—	230
December Quarter	75	44	71	8	26	1	2	—	227
2008									
March Quarter	74	43	70	8	26	1	2	—	224
June Quarter	75	43	71	8	26	1	2	—	226
September Quarter	74	43	70	8	26	1	2	—	224
ON-SITE VANS (no.)									
2007									
September Quarter	1 195	482	1 851	109	373	np	np	—	4 019
December Quarter	1 197	560	1 813	109	365	np	np	—	4 053
2008									
March Quarter	1 204	651	1 944	107	370	np	np	—	4 285
June Quarter	1 181	605	1 832	90	364	np	np	—	4 081
September Quarter	1 190	601	1 923	96	364	np	np	—	4 183
OTHER POWERED SITES (no.)									
2007									
September Quarter	5 576	3 571	5 038	748	2 057	np	np	—	17 240
December Quarter	5 511	3 545	4 936	749	2 058	np	np	—	17 049
2008									
March Quarter	5 342	3 400	4 734	751	2 063	np	np	—	16 540
June Quarter	5 432	3 440	4 893	763	2 084	np	np	—	16 862
September Quarter	5 096	3 289	4 592	758	2 073	np	np	—	16 067
UNPOWERED SITES (no.)									
2007									
September Quarter	814	352	454	114	147	np	np	—	1 959
December Quarter	760	357	456	114	156	np	np	—	1 921
2008									
March Quarter	775	357	506	94	157	np	np	—	1 967
June Quarter	735	356	453	68	152	np	np	—	1 832
September Quarter	772	344	460	77	155	np	np	—	1 907
CABINS FLATS, UNITS AND VILLAS (no.)									
2007									
September Quarter	2 407	1 454	1 812	260	686	np	np	—	6 661
December Quarter	2 370	1 440	1 799	260	692	np	np	—	6 608
2008									
March Quarter	2 345	1 452	1 795	277	690	np	np	—	6 606
June Quarter	2 383	1 460	1 823	281	689	np	np	—	6 677
September Quarter	2 438	1 606	1 845	282	696	np	np	—	6 908

— nil or rounded to zero (including null cells)

np not available for publication but included in totals where applicable, unless otherwise indicated

(a) Comprising establishments with 40 or more powered sites and cabins, flats, units and villas.

Period	New South Wales	Victoria	Queensland	South Australia	Western Australia	Tasmania	Northern Territory	Australian Capital Territory	Australia
TOTAL CAPACITY (no.)									
2007									
September Quarter	9 992	5 859	9 155	1 231	3 263	np	np	—	29 879
December Quarter	9 838	5 902	9 004	1 232	3 271	np	np	—	29 631
2008									
March Quarter	9 666	5 860	8 979	1 229	3 280	np	np	—	29 398
June Quarter	9 731	5 861	9 001	1 202	3 289	np	np	—	29 452
September Quarter	9 496	5 840	8 820	1 213	3 288	np	np	—	29 065
PERSONS EMPLOYED (no.)									
2007									
September Quarter	425	235	436	54	155	np	np	—	1 319
December Quarter	442	239	443	57	169	np	np	—	1 360
2008									
March Quarter	434	248	428	54	160	np	np	—	1 335
June Quarter	439	244	429	55	162	np	np	—	1 342
September Quarter	435	241	483	55	157	np	np	—	1 385
SITES OCCUPIED BY LONG-TERM GUESTS (no.)									
2007									
September Quarter	5 039	2 965	6 179	649	2 020	np	np	—	16 911
December Quarter	5 016	2 993	6 181	608	2 039	np	np	—	16 899
2008									
March Quarter	4 718	3 008	5 955	618	2 044	np	np	—	16 403
June Quarter	4 862	2 710	5 703	614	1 974	np	np	—	15 934
September Quarter	4 690	2 633	5 642	616	1 885	np	np	—	15 514
OTHER SITES PERMANENTLY RESERVED (no.)									
2007									
September Quarter	958	318	413	24	10	np	np	—	1 787
December Quarter	982	280	297	35	34	np	np	—	1 692
2008									
March Quarter	993	324	227	43	30	np	np	—	1 681
June Quarter	924	692	377	18	30	np	np	—	2 105
September Quarter	898	716	305	1	30	np	np	—	2 014
SITE NIGHTS OCCUPIED ('000)									
2007									
September Quarter	675.1	361.3	714.4	86.3	243.4	np	np	—	2 100.6
December Quarter	695.1	382.4	685.9	85.2	241.6	np	np	—	2 111.6
2008									
March Quarter	678.7	418.0	655.6	81.9	237.1	np	np	—	2 091.3
June Quarter	645.9	376.2	671.8	79.1	246.0	np	np	—	2 038.4
September Quarter	645.4	361.2	681.8	71.2	252.2	np	np	—	2 025.4

— nil or rounded to zero (including null cells)

np not available for publication but included in totals where applicable, unless otherwise indicated

(a) Comprising establishments with 40 or more powered sites and cabins, flats, units and villas.

<i>Period</i>	<i>New South Wales</i>	<i>Victoria</i>	<i>Queensland</i>	<i>South Australia</i>	<i>Western Australia</i>	<i>Tasmania</i>	<i>Northern Territory</i>	<i>Australian Capital Territory</i>	<i>Australia</i>
---------------	--------------------------------	-----------------	-------------------	----------------------------	------------------------------	-----------------	-------------------------------	---	------------------

SITE OCCUPANCY RATE (%)

2007									
September Quarter	73.4	67.0	84.8	76.2	81.1	np	np	—	76.4
December Quarter	76.8	70.4	82.8	75.1	80.3	np	np	—	77.5
2008									
March Quarter	77.2	78.5	80.3	73.2	79.4	np	np	—	78.2
June Quarter	72.9	70.5	82.0	72.3	82.2	np	np	—	76.1
September Quarter	73.9	67.2	84.0	63.8	83.4	np	np	—	75.8

TAKINGS FROM ACCOMMODATION (\$'000)

2007									
September Quarter	12 528	6 631	14 708	1 927	5 356	np	np	—	41 655
December Quarter	14 373	7 189	14 765	2 144	5 647	np	np	—	44 525
2008									
March Quarter	14 241	7 583	13 901	1 666	6 439	np	np	—	44 316
June Quarter	11 713	6 151	13 885	2 094	6 453	np	np	—	40 737
September Quarter	12 218	7 089	14 823	1 958	6 343	np	np	—	42 903

— nil or rounded to zero (including null cells)

np not available for publication but included in totals where applicable,
unless otherwise indicated(a) Comprising establishments with 40 or more powered sites and
cabins, flats, units and villas.

Period	New South Wales	Victoria	Queensland	South Australia	Western Australia	Tasmania	Northern Territory	Australian Capital Territory	Australia
ESTABLISHMENTS (no.)									
2007									
September Quarter	519	401	328	143	196	48	51	3	1 689
December Quarter	514	400	327	143	197	48	51	3	1 683
2008									
March Quarter	510	399	324	143	197	47	50	3	1 673
June Quarter	512	397	326	142	197	47	51	3	1 675
September Quarter	506	396	325	142	196	46	53	3	1 667
ON-SITE VANS (no.)									
2007									
September Quarter	8 027	3 278	3 457	510	1 616	np	110	np	17 269
December Quarter	8 221	3 049	3 469	514	1 716	197	93	58	17 317
2008									
March Quarter	8 386	3 343	3 570	507	1 746	231	91	58	17 932
June Quarter	8 511	3 042	3 523	505	1 844	271	89	58	17 843
September Quarter	8 110	3 320	3 624	595	1 902	269	174	59	18 053
OTHER POWERED SITES (no.)									
2007									
September Quarter	45 217	36 389	23 800	12 271	16 875	np	4 616	np	142 530
December Quarter	45 283	36 834	23 987	12 314	16 866	3 008	4 607	373	143 272
2008									
March Quarter	44 598	36 564	23 706	12 329	16 823	2 869	4 541	373	141 803
June Quarter	44 590	36 459	23 773	12 247	16 854	2 829	4 603	373	141 728
September Quarter	43 425	36 059	23 370	11 843	16 887	2 807	4 499	373	139 263
UNPOWERED SITES (no.)									
2007									
September Quarter	11 749	10 093	6 000	4 428	3 381	np	2 956	np	40 708
December Quarter	11 877	10 010	6 089	4 339	3 410	1 707	2 973	400	40 805
2008									
March Quarter	11 829	10 026	6 087	4 296	3 443	1 691	2 898	400	40 670
June Quarter	11 850	9 887	5 814	4 208	3 424	1 612	2 959	400	40 154
September Quarter	11 676	9 840	5 920	4 285	3 389	1 685	2 829	400	40 024
CABINS FLATS, UNITS AND VILLAS (no.)									
2007									
September Quarter	12 464	6 579	6 299	2 652	3 247	np	1 030	np	33 089
December Quarter	12 170	6 445	6 343	2 678	3 374	730	1 062	105	32 907
2008									
March Quarter	12 351	6 666	6 360	2 728	3 473	679	1 056	105	33 418
June Quarter	12 303	6 959	6 402	2 755	3 462	702	1 068	105	33 756
September Quarter	12 772	7 051	6 713	2 780	3 505	646	1 210	96	34 773

np not available for publication but included in totals where applicable, unless otherwise indicated

(a) Comprising establishments with 40 or more powered sites and cabins, flats, units and villas.

Period	New South Wales	Victoria	Queensland	South Australia	Western Australia	Tasmania	Northern Territory	Australian Capital Territory	Australia
TOTAL CAPACITY (no.)									
2007									
September Quarter	77 457	56 339	39 556	19 861	25 119	np	8 712	np	233 596
December Quarter	77 551	56 338	39 888	19 845	25 366	5 642	8 735	936	234 301
2008									
March Quarter	77 164	56 599	39 723	19 860	25 485	5 470	8 586	936	233 823
June Quarter	77 254	56 347	39 512	19 715	25 584	5 414	8 719	936	233 481
September Quarter	75 983	56 270	39 627	19 503	25 683	5 407	8 712	928	232 113
PERSONS EMPLOYED (no.)									
2007									
September Quarter	3 216	1 813	1 904	875	1 308	np	575	np	10 039
December Quarter	3 457	1 985	1 890	881	1 377	298	473	92	10 453
2008									
March Quarter	3 344	2 002	1 872	880	1 388	305	511	84	10 386
June Quarter	3 198	1 932	1 925	788	1 413	259	604	80	10 199
September Quarter	3 257	1 965	2 007	852	1 411	264	647	92	10 495
SITES OCCUPIED BY LONG-TERM GUESTS (no.)									
2007									
September Quarter	11 060	5 791	11 159	1 694	5 052	np	613	np	35 835
December Quarter	11 007	5 626	10 989	1 562	5 200	325	605	155	35 469
2008									
March Quarter	10 595	5 622	10 642	1 601	5 374	315	481	155	34 785
June Quarter	10 617	5 487	10 598	1 535	5 299	271	595	155	34 557
September Quarter	10 641	5 477	10 813	1 535	5 224	327	521	154	34 692
OTHER SITES PERMANENTLY RESERVED (no.)									
2007									
September Quarter	20 394	15 133	1 334	2 172	1 840	np	4	np	41 856
December Quarter	19 602	15 081	1 215	2 190	1 715	994	12	5	40 814
2008									
March Quarter	20 223	15 637	1 142	2 163	1 681	965	17	5	41 833
June Quarter	19 688	15 127	1 235	2 136	1 595	990	15	5	40 791
September Quarter	19 644	14 727	1 354	2 341	1 689	938	—	—	40 693
SITE NIGHTS OCCUPIED ('000)									
2007									
September Quarter	4 000.1	2 350.8	2 470.8	673.8	1 346.5	np	402.0	np	11 432.8
December Quarter	4 224.9	2 647.4	2 007.3	777.6	1 154.7	215.2	177.0	30.0	11 234.1
2008									
March Quarter	4 413.8	2 996.7	1 783.3	835.9	1 185.1	263.9	117.1	31.4	11 627.1
June Quarter	3 872.8	2 420.2	2 095.2	699.8	1 224.5	172.2	283.1	28.4	10 796.2
September Quarter	3 907.6	2 334.1	2 483.2	636.4	1 346.7	157.9	374.8	27.5	11 268.1

— nil or rounded to zero (including null cells)

np not available for publication but included in totals where applicable, unless otherwise indicated

(a) Comprising establishments with 40 or more powered sites and cabins, flats, units and villas.

<i>Period</i>	<i>New South Wales</i>	<i>Victoria</i>	<i>Queensland</i>	<i>South Australia</i>	<i>Western Australia</i>	<i>Tasmania</i>	<i>Northern Territory</i>	<i>Australian Capital Territory</i>	<i>Australia</i>
---------------	--------------------------------	-----------------	-------------------	----------------------------	------------------------------	-----------------	-------------------------------	---	------------------

SITE OCCUPANCY RATE (%)

2007									
September Quarter	56.2	47.2	67.9	36.9	58.4	np	50.2	np	53.8
December Quarter	59.2	52.3	54.7	42.6	49.5	41.5	22.2	34.9	52.4
2008									
March Quarter	62.9	58.2	49.4	46.3	51.2	53.1	15.1	36.9	54.7
June Quarter	55.1	48.1	58.3	39.0	52.6	35.6	35.7	33.3	51.1
September Quarter	55.9	45.6	68.1	35.5	57.1	32.8	46.8	32.2	53.0

TAKINGS FROM ACCOMMODATION (\$'000)

2007									
September Quarter	72 353	36 159	65 200	14 697	34 818	np	12 922	np	239 949
December Quarter	94 985	47 434	53 095	19 288	31 512	5 002	5 983	1 002	258 303
2008									
March Quarter	104 591	56 996	46 763	21 789	35 211	7 795	4 754	1 123	279 021
June Quarter	70 394	34 214	55 759	17 377	36 060	3 493	10 897	1 063	229 256
September Quarter	74 305	39 580	70 017	15 232	38 009	3 078	13 462	1 263	254 945

np not available for publication but included in totals where applicable, unless otherwise indicated

(a) Comprising establishments with 40 or more powered sites and cabins, flats, units and villas.

	New South Wales	Victoria	Queensland	South Australia	Western Australia	Tasmania	Northern Territory	Australian Capital Territory	Australia
--	-----------------------	----------	------------	--------------------	----------------------	----------	-----------------------	------------------------------------	-----------

LETTING ENTITIES (a) (no.)

2007									
September Quarter	95	15	34	8	2	1	—	—	155
December Quarter	94	15	34	8	2	2	—	—	155
2008									
March Quarter	94	15	34	8	2	2	—	—	155
June Quarter	97	15	33	9	2	2	—	—	158
September Quarter	98	13	33	9	2	2	1	—	158

SINGLE BEDROOM HOLIDAY FLATS, UNITS AND HOUSES (no.)

2007									
September Quarter	399	44	149	np	np	np	—	—	605
December Quarter	400	52	146	10	np	np	—	—	611
2008									
March Quarter	386	95	160	9	np	np	—	—	653
June Quarter	353	55	151	9	np	np	—	—	571
September Quarter	359	72	153	11	np	np	np	—	609

MULTIPLE BEDROOM HOLIDAY FLATS, UNITS AND HOUSES (no.)

2007									
September Quarter	7 619	1 671	2 779	np	np	np	—	—	12 955
December Quarter	7 533	1 701	2 851	730	np	np	—	—	13 029
2008									
March Quarter	7 653	1 703	2 780	719	np	np	—	—	13 070
June Quarter	7 533	1 699	2 774	732	np	np	—	—	12 954
September Quarter	7 466	1 817	2 796	706	np	np	np	—	13 004

TOTAL HOLIDAY FLATS, UNITS AND HOUSES (no.)

2007									
September Quarter	8 018	1 715	2 928	np	np	np	—	—	13 560
December Quarter	7 933	1 753	2 997	740	np	np	—	—	13 640
2008									
March Quarter	8 039	1 798	2 940	728	np	np	—	—	13 723
June Quarter	7 886	1 754	2 925	741	np	np	—	—	13 525
September Quarter	7 825	1 889	2 949	717	np	np	np	—	13 613

BED SPACES (no.)

2007									
September Quarter	44 085	11 727	14 094	np	np	np	—	—	76 631
December Quarter	43 543	11 953	14 204	5 494	np	np	—	—	76 547
2008									
March Quarter	44 080	11 544	14 268	5 647	np	np	—	—	76 903
June Quarter	42 920	12 229	14 352	5 324	np	np	—	—	76 139
September Quarter	42 758	11 912	14 158	5 168	np	np	np	—	75 318

— nil or rounded to zero (including null cells)

np not available for publication but included in totals where applicable, unless otherwise indicated

(a) The number of managers, owners or real estate agents with 15 or more self-contained units.

	New South Wales	Victoria	Queensland	South Australia	Western Australia	Tasmania	Northern Territory	Australian Capital Territory	Australia
UNIT NIGHTS OCCUPIED ('000)									
2007									
September Quarter	173.1	9.0	134.8	np	np	np	—	—	328.7
December Quarter	220.9	15.8	154.7	11.3	np	np	—	—	411.7
2008									
March Quarter	282.3	18.8	136.5	19.5	np	np	—	—	466.0
June Quarter	145.9	7.9	112.4	8.4	np	np	—	—	281.2
September Quarter	163.2	12.2	142.5	7.2	np	np	np	—	332.8
UNIT OCCUPANCY RATE (%)									
2007									
September Quarter	23.5	5.7	50.0	np	np	np	—	—	26.4
December Quarter	30.3	9.8	56.1	16.7	np	np	—	—	32.9
2008									
March Quarter	38.6	11.5	51.1	29.5	np	np	—	—	37.4
June Quarter	20.3	5.0	42.2	12.5	np	np	—	—	22.9
September Quarter	22.7	7.0	52.5	10.9	np	np	np	—	26.6
UNIT LETTINGS ('000)									
2007									
September Quarter	28.3	2.2	25.0	np	np	np	—	—	59.4
December Quarter	38.7	5.4	34.2	4.8	np	np	—	—	84.4
2008									
March Quarter	42.7	4.3	26.5	8.7	np	np	—	—	83.6
June Quarter	24.0	2.3	21.3	4.7	np	np	—	—	53.2
September Quarter	23.7	2.7	22.9	3.8	np	np	np	—	54.2
AVERAGE LENGTH OF STAY (days)									
2007									
September Quarter	6.1	4.2	5.4	np	np	np	—	—	5.5
December Quarter	5.7	2.9	4.5	2.4	np	np	—	—	4.9
2008									
March Quarter	6.6	4.4	5.2	2.2	np	np	—	—	5.6
June Quarter	6.1	3.4	5.3	1.8	np	np	—	—	5.3
September Quarter	6.9	4.4	6.2	1.9	np	np	np	—	6.1
TAKINGS FROM ACCOMMODATION (\$'000)									
2007									
September Quarter	16 647	1 633	14 065	np	np	np	—	—	33 643
December Quarter	25 202	2 313	17 133	1 311	np	np	—	—	46 909
2008									
March Quarter	34 050	2 351	15 084	2 516	np	np	—	—	54 909
June Quarter	11 951	778	10 623	698	np	np	—	—	24 683
September Quarter	16 326	2 226	14 094	566	np	np	np	—	33 983

— nil or rounded to zero (including null cells)

np not available for publication but included in totals where applicable, unless otherwise indicated

	New South Wales	Victoria	Queensland	South Australia	Western Australia	Tasmania	Northern Territory	Australian Capital Territory	Australia
--	-----------------------	----------	------------	--------------------	----------------------	----------	-----------------------	------------------------------------	-----------

LETING ENTITIES (a) (no.)

2007									
September Quarter	59	19	312	7	19	7	2	3	428
December Quarter	59	19	316	7	18	7	2	3	431
2008									
March Quarter	58	19	313	7	19	7	2	3	428
June Quarter	59	21	314	7	18	6	2	3	430
September Quarter	58	21	312	7	19	6	2	3	428

SINGLE BEDROOM HOLIDAY FLATS, UNITS AND HOUSES (no.)

2007									
September Quarter	445	303	2 976	np	np	np	np	np	4 378
December Quarter	430	302	3 059	101	np	np	np	np	4 351
2008									
March Quarter	428	312	2 975	98	np	np	np	np	4 312
June Quarter	443	311	3 021	100	np	np	np	np	4 361
September Quarter	441	311	2 839	100	np	np	np	np	4 189

MULTIPLE BEDROOM HOLIDAY FLATS, UNITS AND HOUSES (no.)

2007									
September Quarter	1 133	582	7 754	np	np	np	np	np	10 631
December Quarter	1 196	604	7 883	140	np	np	np	np	10 798
2008									
March Quarter	1 178	591	7 970	140	np	np	np	np	10 863
June Quarter	1 192	769	7 842	142	np	np	np	np	10 889
September Quarter	1 213	774	7 789	141	np	np	np	np	10 887

TOTAL HOLIDAY FLATS, UNITS AND HOUSES (no.)

2007									
September Quarter	1 578	885	10 730	np	np	np	np	np	15 009
December Quarter	1 626	906	10 942	241	np	np	np	np	15 149
2008									
March Quarter	1 606	903	10 945	238	np	np	np	np	15 175
June Quarter	1 635	1 080	10 863	242	np	np	np	np	15 250
September Quarter	1 654	1 085	10 628	241	np	np	np	np	15 076

BED SPACES (no.)

2007									
September Quarter	6 854	3 772	41 926	np	np	np	np	np	61 331
December Quarter	7 121	3 816	42 982	999	np	np	np	np	62 265
2008									
March Quarter	7 091	3 806	43 179	989	np	np	np	np	62 556
June Quarter	7 118	4 402	42 916	1 009	np	np	np	np	62 385
September Quarter	7 204	4 408	41 927	1 015	np	np	np	np	61 672

np not available for publication but included in totals where applicable, unless otherwise indicated

(a) The number of owners, managers or real estate agents with 15 or more self-contained units.

	New South Wales	Victoria	Queensland	South Australia	Western Australia	Tasmania	Northern Territory	Australian Capital Territory	Australia
PERSONS EMPLOYED (no.)									
2007									
September Quarter	537	220	1 265	np	np	np	np	np	2 527
December Quarter	557	219	1 296	59	np	np	np	np	2 542
2008									
March Quarter	506	227	1 253	59	np	np	np	np	2 450
June Quarter	526	260	1 230	59	np	np	np	np	2 470
September Quarter	509	277	1 275	60	np	np	np	np	2 526
UNIT NIGHTS OCCUPIED ('000)									
2007									
September Quarter	79.1	51.1	701.7	np	np	np	np	np	931.8
December Quarter	90.5	47.0	690.1	14.8	np	np	np	np	942.5
2008									
March Quarter	88.9	50.2	632.7	15.5	np	np	np	np	894.1
June Quarter	68.5	47.1	529.2	13.2	np	np	np	np	747.3
September Quarter	75.2	51.8	664.1	13.2	np	np	np	np	889.7
UNIT OCCUPANCY RATE (%)									
2007									
September Quarter	55.3	62.8	71.1	np	np	np	np	np	67.6
December Quarter	60.5	58.0	68.6	66.9	np	np	np	np	67.7
2008									
March Quarter	60.9	61.2	63.5	71.4	np	np	np	np	64.8
June Quarter	46.2	47.9	53.5	59.7	np	np	np	np	53.9
September Quarter	49.7	51.9	67.9	59.5	np	np	np	np	64.2
UNIT LETTINGS ('000)									
2007									
September Quarter	28.0	9.2	241.0	np	np	np	np	np	312.7
December Quarter	39.0	10.5	264.5	3.6	np	np	np	np	352.7
2008									
March Quarter	31.9	10.5	237.1	4.0	np	np	np	np	320.8
June Quarter	29.3	10.4	210.4	3.9	np	np	np	np	290.2
September Quarter	28.4	10.3	231.5	4.5	np	np	np	np	305.5
AVERAGE LENGTH OF STAY (days)									
2007									
September Quarter	2.8	5.5	2.9	np	np	np	np	np	3.0
December Quarter	2.3	4.5	2.6	4.1	np	np	np	np	2.7
2008									
March Quarter	2.8	4.8	2.7	3.8	np	np	np	np	2.8
June Quarter	2.3	4.5	2.5	3.3	np	np	np	np	2.6
September Quarter	2.6	5.0	2.9	2.9	np	np	np	np	2.9
TAKINGS FROM ACCOMMODATION (\$'000)									
2007									
September Quarter	11 504	8 206	84 949	np	np	np	np	np	116 381
December Quarter	13 258	6 498	95 927	1 856	np	np	np	np	129 565
2008									
March Quarter	13 600	7 356	84 717	2 007	np	np	np	np	121 825
June Quarter	8 731	6 273	63 339	1 360	np	np	np	np	90 473
September Quarter	11 963	8 363	85 305	1 534	np	np	np	np	117 233

np not available for publication but included in totals where applicable, unless otherwise indicated

	New South Wales	Victoria	Queensland	South Australia	Western Australia	Tasmania	Northern Territory	Australian Capital Territory	Australia
--	-----------------------	----------	------------	--------------------	----------------------	----------	-----------------------	------------------------------------	-----------

LETTING ENTITIES (a) (no.)

2007									
September Quarter	154	34	346	15	21	8	2	3	583
December Quarter	153	34	350	15	20	9	2	3	586
2008									
March Quarter	152	34	347	15	21	9	2	3	583
June Quarter	156	36	347	16	20	8	2	3	588
September Quarter	156	34	345	16	21	8	3	3	586

SINGLE BEDROOM HOLIDAY FLATS, UNITS AND HOUSES (no.)

2007									
September Quarter	844	347	3 125	108	422	48	np	np	4 983
December Quarter	830	354	3 205	111	325	48	np	np	4 962
2008									
March Quarter	814	407	3 135	107	365	48	np	np	4 965
June Quarter	796	366	3 172	109	359	41	np	np	4 932
September Quarter	800	383	2 992	111	373	np	41	np	4 798

MULTIPLE BEDROOM HOLIDAY FLATS, UNITS AND HOUSES (no.)

2007									
September Quarter	8 752	2 253	10 533	855	873	156	np	np	23 586
December Quarter	8 729	2 305	10 734	870	832	193	np	np	23 827
2008									
March Quarter	8 831	2 294	10 750	859	842	193	np	np	23 933
June Quarter	8 725	2 468	10 616	874	811	185	np	np	23 843
September Quarter	8 679	2 591	10 585	847	837	np	58	np	23 891

TOTAL HOLIDAY FLATS, UNITS AND HOUSES (no.)

2007									
September Quarter	9 596	2 600	13 658	963	1 295	204	np	np	28 569
December Quarter	9 559	2 659	13 939	981	1 157	241	np	np	28 789
2008									
March Quarter	9 645	2 701	13 885	966	1 207	241	np	np	28 898
June Quarter	9 521	2 834	13 788	983	1 170	226	np	np	28 775
September Quarter	9 479	2 974	13 577	958	1 210	np	99	np	28 689

BED SPACES (no.)

2007									
September Quarter	50 939	15 499	56 020	6 596	6 571	1 006	np	np	137 962
December Quarter	50 664	15 769	57 186	6 493	6 149	1 220	np	np	138 812
2008									
March Quarter	51 171	15 350	57 447	6 636	6 296	1 219	np	np	139 459
June Quarter	50 038	16 631	57 268	6 333	6 097	1 120	np	np	138 524
September Quarter	49 962	16 320	56 085	6 183	6 277	np	414	np	136 990

np not available for publication but included in totals where applicable, unless otherwise indicated

(a) The number of owners, managers or real estate agents with 15 or more self-contained units.

	New South Wales	Victoria	Queensland	South Australia	Western Australia	Tasmania	Northern Territory	Australian Capital Territory	Australia
UNIT NIGHTS OCCUPIED ('000)									
2007									
September Quarter	252.2	60.1	836.5	18.3	68.9	4.5	np	np	1 260.5
December Quarter	311.4	62.8	844.8	26.2	78.8	11.2	np	np	1 354.1
2008									
March Quarter	371.3	69.0	769.2	35.0	81.0	15.3	np	np	1 360.2
June Quarter	214.4	55.0	641.6	21.6	70.0	6.5	np	np	1 028.5
September Quarter	238.3	63.9	806.6	20.4	67.8	np	8.0	np	1 222.5
UNIT OCCUPANCY RATE (%)									
2007									
September Quarter	28.6	25.1	66.6	20.6	57.8	23.7	np	np	48.0
December Quarter	35.4	25.9	65.9	29.0	74.1	55.3	np	np	51.2
2008									
March Quarter	42.4	28.1	60.9	39.8	73.8	69.6	np	np	51.8
June Quarter	24.8	21.4	51.1	24.1	65.7	31.6	np	np	39.3
September Quarter	27.4	23.4	64.6	23.1	60.9	np	88.1	np	46.3
UNIT LETTINGS ('000)									
2007									
September Quarter	56.3	11.4	266.0	6.8	24.9	1.8	np	np	372.1
December Quarter	77.7	15.9	298.7	8.4	27.5	4.4	np	np	437.1
2008									
March Quarter	74.6	14.8	263.6	12.8	27.6	6.8	np	np	404.4
June Quarter	53.3	12.7	231.6	8.6	29.0	3.5	np	np	343.4
September Quarter	52.1	13.1	254.5	8.3	24.4	np	3.0	np	359.7
AVERAGE LENGTH OF STAY (days)									
2007									
September Quarter	4.5	5.3	3.1	2.7	2.8	2.4	np	np	3.4
December Quarter	4.0	3.9	2.8	3.1	2.9	2.5	np	np	3.1
2008									
March Quarter	5.0	4.7	2.9	2.7	2.9	2.2	np	np	3.4
June Quarter	4.0	4.3	2.8	2.5	2.4	1.8	np	np	3.0
September Quarter	4.6	4.9	3.2	2.5	2.8	np	2.7	np	3.4
TAKINGS FROM ACCOMMODATION (\$'000)									
2007									
September Quarter	28 151	9 839	99 014	1 944	7 584	442	np	np	150 025
December Quarter	38 459	8 811	113 060	3 167	9 174	1 311	np	np	176 474
2008									
March Quarter	47 650	9 707	99 801	4 524	10 629	1 828	np	np	176 734
June Quarter	20 682	7 051	73 962	2 057	7 754	767	np	np	115 157
September Quarter	28 289	10 588	99 399	2 101	7 166	np	1 368	np	151 216

np not available for publication but included in totals where applicable, unless otherwise indicated

Period	New South Wales	Victoria	Queensland	South Australia	Western Australia	Tasmania	Northern Territory	Australian Capital Territory	Australia
ESTABLISHMENTS (no.)									
2007									
September Quarter	101	65	122	29	63	20	21	5	426
December Quarter	100	65	119	29	64	20	22	5	424
2008									
March Quarter	98	63	118	27	63	20	21	5	415
June Quarter	97	65	117	28	63	20	21	3	414
September Quarter	98	65	117	27	62	20	21	3	413
BED SPACES (no.)									
2007									
September Quarter	11 480	8 504	13 755	2 867	5 197	1 500	2 877	977	47 157
December Quarter	11 475	8 465	13 615	2 827	5 072	1 508	3 210	977	47 149
2008									
March Quarter	11 255	8 413	13 701	2 470	4 894	1 533	3 146	974	46 386
June Quarter	11 258	8 534	13 787	2 554	5 117	1 566	3 134	721	46 671
September Quarter	11 403	8 510	13 658	2 433	4 911	1 451	3 093	716	46 175
PERSONS EMPLOYED (no.)									
2007									
September Quarter	677	495	1 244	128	307	135	266	102	3 354
December Quarter	733	500	1 295	140	316	139	223	103	3 449
2008									
March Quarter	714	512	1 254	113	318	146	235	99	3 391
June Quarter	674	489	1 307	116	310	136	261	47	3 340
September Quarter	673	485	1 297	121	331	125	297	65	3 394
GUEST NIGHTS OCCUPIED (no.)									
2007									
September Quarter	495 124	271 884	717 354	100 259	236 868	16 549	166 878	43 351	2 048 267
December Quarter	656 073	358 557	689 044	93 516	267 129	34 781	125 434	40 171	2 264 705
2008									
March Quarter	688 429	462 481	654 058	99 887	292 160	61 916	94 244	46 551	2 399 726
June Quarter	503 706	330 817	730 086	70 964	275 758	27 878	153 736	32 881	2 125 826
September Quarter	534 841	325 008	761 036	92 151	250 235	15 707	196 392	39 538	2 214 908
BED OCCUPANCY RATE (%)									
2007									
September Quarter	47.1	35.1	57.3	38.0	49.5	12.0	63.0	48.2	47.5
December Quarter	62.8	46.4	55.0	36.0	57.2	25.1	42.5	49.6	52.5
2008									
March Quarter	67.3	60.7	53.0	44.4	65.6	44.4	33.0	57.9	57.2
June Quarter	49.2	42.7	58.2	30.7	59.2	19.6	53.9	50.1	50.1
September Quarter	50.8	41.5	60.8	41.2	55.4	11.8	69.0	60.0	52.2
GUEST ARRIVALS (no.)									
2007									
September Quarter	156 877	74 342	278 740	43 263	65 532	10 070	55 978	20 381	705 183
December Quarter	177 892	108 341	262 159	34 724	73 629	18 931	52 562	19 490	747 728
2008									
March Quarter	207 636	138 954	257 308	35 170	76 541	36 184	52 027	21 150	824 970
June Quarter	162 638	102 106	270 188	25 778	78 336	14 360	81 652	16 137	751 195
September Quarter	173 573	93 117	286 292	37 111	59 743	9 693	84 768	19 318	763 615

(a) Comprising establishments with 25 or more bed spaces.

<i>Period</i>	<i>New South Wales</i>	<i>Victoria</i>	<i>Queensland</i>	<i>South Australia</i>	<i>Western Australia</i>	<i>Tasmania</i>	<i>Northern Territory</i>	<i>Australian Capital Territory</i>	<i>Australia</i>
---------------	--------------------------------	-----------------	-------------------	----------------------------	------------------------------	-----------------	-------------------------------	---	------------------

AVERAGE LENGTH OF STAY (*days*)

2007									
September Quarter	3.2	3.7	2.6	2.3	3.6	1.6	3.0	2.1	2.9
December Quarter	3.7	3.3	2.6	2.7	3.6	1.8	2.4	2.1	3.0
2008									
March Quarter	3.3	3.3	2.5	2.8	3.8	1.7	1.8	2.2	2.9
June Quarter	3.1	3.2	2.7	2.8	3.5	1.9	1.9	2.0	2.8
September Quarter	3.1	3.5	2.7	2.5	4.2	1.6	2.3	2.0	2.9

TAKINGS FROM ACCOMMODATION (\$'000)

2007									
September Quarter	13 687	7 220	16 774	2 308	5 442	374	4 254	1 215	51 274
December Quarter	18 869	9 426	16 932	2 122	6 487	771	2 933	1 162	58 703
2008									
March Quarter	19 886	12 706	15 474	2 339	7 285	1 317	2 172	1 366	62 546
June Quarter	13 788	9 037	17 292	1 629	6 600	579	3 975	1 156	54 057
September Quarter	15 200	9 228	19 562	1 888	6 629	392	5 604	1 250	59 754

(a) Comprising establishments with 25 or more bed spaces.

EXPLANATORY NOTES

INTRODUCTION

1 This publication presents data from the quarterly Survey of Tourist Accommodation (STA). The STA is a mailout collection that completely enumerates all in-scope accommodation establishments within Australia.

SCOPE

2 From March quarter 2005, the scope of the STA comprises the following categories of establishments:

- licensed hotels and resorts with facilities and 5 or more rooms
- motels, private hotels and guest houses with facilities and 5 or more rooms
- serviced apartments with 5 or more units
- caravan parks with 40 or more powered sites
- holiday flats, units and houses of letting entities with 15 or more rooms or units
- visitor hostels with 25 or more bed spaces.

3 With the exception of caravan parks, these establishments provide predominantly short-term non-residential accommodation, i.e. accommodation which is not leased, and which is provided to guests who would generally stay for periods of less than two months. Some of these establishments also provide long-term residential accommodation. The amount of such activity is considered to be insignificant and is included in the data presented in this publication.

4 Caravan parks provide either short-term or long-term accommodation. If a caravan park has the majority of sites occupied by paying guests who have stayed continuously for two months or more during the survey period, the caravan park is classified as long-term. Data for caravan parks are presented by short-term and long-term in this publication.

5 Previous to March quarter 2005, the scope of the STA comprised:

- licensed hotels and resorts with facilities and 15 or more rooms
- motels, private hotels and guest houses with facilities and 15 or more rooms
- serviced apartments with 15 or more units.

6 For the four quarters of 2000 and 2003, the scope of the STA was expanded to include:

- caravan parks with 40 or more powered sites
- holiday flats, units and houses of letting entities with 15 or more rooms or units
- visitor hostels with 25 or more bed spaces.

COVERAGE

7 The main source of coverage is from the Australian Automobile Association through AAA Tourism Pty Ltd. This is supplemented by notification of new tourism developments and their likely opening dates in selected guides, major tourism journals and periodicals and newspapers. Periodic comparison with lists of accommodation establishments provided by the various tourism organisations and industry associations is also undertaken.

TAKINGS FROM ACCOMMODATION

8 From 1 July 2000, takings from accommodation include gross revenue from the provision of accommodation, including GST. Takings from meals are excluded. Where businesses are unable to provide the data inclusive of GST, it is automatically adjusted by the ABS prior to aggregation and release in output.

STAR GRADING

9 Star grade classifications of establishments are continuously revised by AAA Tourism Pty Ltd. This should be taken into account when making comparisons over time. Any queries regarding the star grading process should be directed to AAA Tourism Pty Ltd on (03) 8601 2200 or email <enquiries@aaatourism.com.au>.

10 Data by star grade for states and territories are included in the data cubes that accompany this publication: Tourist Accommodation, Small Area Data (cat. no. 8635.0.55.002 for national data and cat. no. 8635.1.55.001 – 8635.8.55.001 for state/territory data).

EXPLANATORY NOTES *continued*

STATISTICAL GEOGRAPHY

11 Small area statistics for 2008 are classified to the Australian Standard Geographical Classification (ASGC), 2007 Edition (cat. no. 1216.0). Data are coded to the statistical local area (SLA) level.

12 These SLA data are aggregated to tourism regions as defined by relevant state and territory tourism organisations. Tourism regions are reviewed annually and are subject to boundary and name changes. Where changes have occurred care should be taken when making comparisons with previously published data at this level.

13 Data by tourism regions are no longer presented in this publication. Small area data are provided in the data cubes that accompany this publication: Tourist Accommodation, Small Area Data (cat. no. 8635.0.55.002 for national data and cat. no. 8635.1.55.001 – 8635.8.55.001 for state/territory data).

14 Details of SLAs, the composition of tourism regions and maps of tourism regions are provided in the ABS publication Tourism Region Maps and Concordance Files, Australia (cat. no. 9503.0.55.001) available from the ABS web site <www.abs.gov.au>.

DATA QUALITY

15 The survey does not have a sample component and the data are not subject to sampling variability. However, other inaccuracies collectively referred to as non-sampling error may affect the data. These non-sampling errors may arise from a number of sources, including:

- errors in the reporting of data by providers
- errors in the process of capturing data
- imputation for missing data
- definition and classification errors
- incomplete coverage.

16 Every effort has been made to reduce non-sampling error to a minimum by careful design and testing of questionnaires, and efficient operating procedures and systems used to compile statistics.

EXPLANATORY NOTES *continued*

Response rates

17 The response rates for Australia for the most recent quarters are shown below:

RESPONSE RATES

	Sep Qtr 2007	Dec Qtr 2007	Mar Qtr 2008	Jun Qtr 2008	Sep Qtr 2008
<i>Activity</i>	%	%	%	%	%
Licensed hotels with facilities					
with 5 to 14 rooms	83.2	77.6	84.6	79.6	82.3
with 15 or more rooms	90.1	86.8	90.8	88.2	90.2
with 5 or more rooms	87.7	83.6	88.6	85.2	87.5
Motels and guest houses					
with 5 to 14 rooms	87.9	85.8	89.3	85.6	88.2
with 15 or more rooms	89.8	85.8	90.7	89.1	88.6
with 5 or more rooms	89.2	85.8	90.3	88.0	88.5
Serviced apartments					
with 5 to 14 rooms	88.4	85.5	89.1	87.5	89.8
with 15 or more rooms	92.3	88.6	93.7	92.1	91.3
with 5 or more rooms	91.2	87.7	92.5	90.8	90.9
Hotels, motels and serviced apartments					
with 5 to 14 rooms	86.9	83.9	88.2	84.6	87.1
with 15 or more rooms	90.4	86.6	91.4	89.6	89.5
with 5 or more rooms	89.3	85.7	90.4	88.0	88.8
Caravan parks	90.3	94.7	92.5	89.4	89.4
Holiday flats, units and houses	88.7	92.0	92.5	87.6	85.7
Visitor hostels	90.6	92.2	91.1	86.7	85.7

Imputation rates

18 Missing data items are replaced by imputed values based on reported data. Average quarterly movements are applied to previously reported data for each non-responding unit to estimate values for missing data items. Only if previously reported data are not available, then data from a similar unit is used as a 'donor' for the missing data items.

EXPLANATORY NOTES *continued*

Imputation rates continued

19 The imputation rates for Australia for the most recent quarters are shown below:

IMPUTATION RATES, NIGHTS OCCUPIED (a)

	Sep Qtr 2007	Dec Qtr 2007	Mar Qtr 2008	Jun Qtr 2008	Sep Qtr 2008
<i>Activity</i>	%	%	%	%	%
Licensed hotels with facilities					
with 5 to 14 rooms	14.5	20.9	14.1	19.1	17.2
with 15 or more rooms	2.1	3.4	2.9	4.4	2.6
with 5 or more rooms	2.4	3.8	3.2	4.8	3.0
Motels and guest houses					
with 5 to 14 rooms	11.3	13.3	9.9	13.5	9.3
with 15 or more rooms	7.5	10.2	7.3	9.6	9.2
with 5 or more rooms	7.8	9.6	7.5	9.9	9.3
Serviced apartments					
with 5 to 14 rooms	9.9	13.4	8.9	10.2	9.2
with 15 or more rooms	4.6	6.9	4.0	6.0	5.9
with 5 or more rooms	4.8	7.2	4.2	6.2	6.0
Hotels, motels and serviced apartments					
with 5 to 14 rooms	11.6	14.6	10.5	14.0	10.8
with 15 or more rooms	4.6	6.7	4.7	6.7	5.8
with 5 or more rooms	5.0	5.5	5.0	7.1	6.1
Caravan parks	7.8	4.2	7.0	9.0	8.4
Holiday flats, units and houses	9.3	6.3	6.8	9.8	9.2
Visitor hostels	7.3	6.7	8.5	14.7	15.5

(a) Based on room nights for hotels, motels and serviced apartments; site nights for caravan parks; unit nights for holiday flats, units and houses; and guest nights for visitor hostels

IMPUTATION RATES, TAKINGS FROM ACCOMMODATION

	Sep Qtr 2007	Dec Qtr 2007	Mar Qtr 2008	Jun Qtr 2008	Sep Qtr 2008
<i>Activity</i>	%	%	%	%	%
Licensed hotels with facilities					
with 5 to 14 rooms	14.9	21.9	14.1	19.7	17.1
with 15 or more rooms	1.4	2.3	2.1	3.8	1.9
with 5 or more rooms	1.5	2.5	2.2	4.0	2.1
Motels and guest houses					
with 5 to 14 rooms	10.9	13.5	10.6	13.6	9.8
with 15 or more rooms	7.0	9.3	7.0	8.8	8.8
with 5 or more rooms	7.3	10.5	7.3	9.2	8.9
Serviced apartments					
with 5 to 14 rooms	10.3	12.7	8.7	10.2	10.1
with 15 or more rooms	4.0	6.4	3.4	6.0	5.1
with 5 or more rooms	4.3	6.6	3.6	6.2	5.3
Hotels, motels and serviced apartments					
with 5 to 14 rooms	11.3	14.5	10.6	13.7	10.9
with 15 or more rooms	3.6	5.1	3.7	5.7	4.6
with 5 or more rooms	3.8	7.1	3.9	6.0	4.9
Caravan parks	7.8	3.4	5.9	9.3	8.2
Holiday flats, units and houses	8.6	7.0	7.5	8.7	8.5
Visitor hostels	6.5	6.6	8.7	13.7	14.7

SEASONAL ADJUSTMENT

20 Seasonal adjustment is a means of removing the estimated effects of normal seasonal variation from the original time series so that the effect of other influences on the series may be more clearly recognised. Seasonal adjustment procedures do not aim to remove the irregular or non-seasonal influences which may be present in any

EXPLANATORY NOTES *continued*

particular quarter. Irregular influences that are highly volatile can make it difficult to interpret the movement of the series even after adjustment for seasonal variation, and cannot be assumed to indicate changes in the trend.

21 The seasonally adjusted estimates in this publication have been produced using a concurrent methodology whereby the seasonal factors are revised each month to take into account the seasonality exhibited by the latest observation. A more detailed review is conducted annually.

22 Recently, the ABS has implemented improved methods of producing seasonally adjusted estimates, focused on the application of Autoregressive Integrated Moving Average (ARIMA) modelling techniques. The revision properties of the seasonally adjusted and trend estimates can be improved by the use of ARIMA modelling. ARIMA modelling relies on the characteristics of the series being analysed to project future period data. The projected values are temporary, intermediate values, that are only used internally to improve the estimation of the seasonal factors. The projected data do not affect the original estimates and are discarded at the end of the seasonal adjustment process.

23 From the March quarter 2008, the Survey of Tourist Accommodation collection has implemented ARIMA modelling for the majority of applicable time series. For more information on the details of ARIMA modelling see the feature article 'Use of ARIMA modelling to reduce revisions' in the October 2004 issue of Australian Economic Indicators (cat. no. 1350.0). Any queries regarding the ARIMA modelling should be directed to Time Series Analysis on (02) 6252 6345 or email <time.series.analysis@abs.gov.au>.

TREND ESTIMATES

24 Smoothing the seasonally adjusted series reduces the impact of the irregular component of the seasonally adjusted series and creates the trend estimates. The trend estimates are derived by applying a 7-term Henderson moving average to the quarterly seasonally adjusted series. The Henderson moving average used in the middle of the time series is symmetric but, as the end of a time series is approached, asymmetric forms of the symmetric moving average are applied. Unlike the weights of the standard 7-term Henderson moving average, the weights used with the quarterly data have been tailored to suit the particular characteristics of individual series.

25 While these techniques enable trend estimates for the latest period to be produced, the process does result in revisions to the trend estimates in recent quarters, particularly as additional original estimates become available. For further information refer to Information Paper: A Guide to Interpreting Time Series - Monitoring Trends, 2003 (cat. no. 1349.0) available at the ABS web site <www.abs.gov.au>.

CONFIDENTIALISATION OF DATA

26 Under the Census and Statistics Act, when releasing statistics the ABS is required to do this in a manner that is "not likely" (in a legal sense) to enable the identification of a particular person or organisation. A number of techniques are used to do this, including suppression of information. To ensure provider confidentiality in the Survey of Tourist Accommodation, the ABS uses a computerised process known as Disclosure Avoidance Analysis System (DAAS) to confidentialise the entire tourist accommodation dataset each quarter. This process not only ensures that data are suppressed to ensure individual establishments cannot be identified, but also suppresses data in other (consequential) cells to ensure data cannot be derived through deduction from the information available.

27 While the scope and coverage of the Survey of Tourist Accommodation has been expanded, priority has been given to maintaining the integrity and continuity of the core collection (hotels, motels and guest houses, and serviced apartments with 15 or more rooms). In order to maximise data released from the core collection series and the new components of the expanded scope collection (hotels, motels and guest houses, and

EXPLANATORY NOTES *continued*

CONFIDENTIALISATION OF DATA *continued*

serviced apartments with 5-14 rooms), the 'total' series (5 or more rooms) has been used for any consequential confidentiality required where possible.

28 The DAAS process begins by confidentialising at the Statistical Local Area (SLA) level, then across Tourism regions, then at the state level and finally the national level. If there is an SLA that has been made confidential then another SLA will have to be made confidential within that Tourism region to protect the confidentiality of the providers in the SLA that was originally made confidential. Depending on the number of SLAs in the Tourism region the whole Tourism region may need to be made confidential. As a consequence of this, at least one more Tourism region within a state or territory will also be confidentialised. This may also occur at the state/territory level.

USER AGGREGATION OF DATA

29 The aggregation of data by users across time periods should be undertaken with caution, due to the possibility of non-inclusion of confidentialised data (see the above section for more information about confidentialisation). Where one or more cells contributing to a total have been confidentialised (ie, contains the value of n.p.), the resulting aggregated total will be incorrect. However, some broader levels of data may not be affected by confidentialised cells.

30 Where data can be aggregated (ie, no confidentialised cells are included) for calendar and financial year/s purposes, the data items Establishments, Rooms, Persons employed and Bed spaces should not be aggregated. For these items it is recommended that for calendar years, the value of the December quarter is used, and for financial years, the value of the June quarter is used.

31 Any data items that have been derived from other items collected in the survey cannot be aggregated (ie, all those with labels ending in 'rate' or commencing with 'average'). These items must be re-derived based on the aggregation of each of the quarterly items collected in the survey used in the derivation of the rate or average (see Glossary for formulas).

32 Users are cautioned against deriving any non-standard aggregations (eg, aggregation of selected star gradings such as 4-star and 5-star; aggregation of selected geographical areas such as capital city areas and balance of state; aggregation of selected activities such as hotels and motels combined). This is because data are confidentialised based on the standard data item structure.

EFFECTS OF ROUNDING

33 Where figures have been rounded, discrepancies may occur between totals and the sum of the component items.

RELATED PUBLICATIONS

34 Other ABS publications and products which may be of interest are outlined below. All publications released from 1998 onwards are available on the ABS web site <www.abs.gov.au>.

Tourist Accommodation, Small Area Data (cat. no. 8635.0.55.002) (data cube for Australia – issued quarterly)

Tourist Accommodation, Small Area Data (cat. no. 8635.1.55.001–8635.8.55.001) (data cubes for each state/territory – issued quarterly)

Tourism Region Maps and Concordance Files, Australia (cat. no. 9503.0.55.001) (annual)

Tourist Accommodation, Australia, Expanded Scope Collection (cat. no. 8635.0.55.001) (irregular)

Short-term Visitor Arrivals Estimates, Australia (cat. no. 3401.0.55.001) (issued monthly)

Overseas Arrivals and Departures, Australia (cat. no. 3401.0) (issued monthly)

Australian National Accounts, Tourism Satellite Account (cat. no. 5249.0) (annual)

EXPLANATORY NOTES *continued*

RELATED PUBLICATIONS

continued

35 The catalogue of current publications and other products is available from the ABS web site <www.abs.gov.au>. The ABS also issues release advices on the web site which detail products to be released both in the coming week and the next six months.

ABS DATA AVAILABLE ON REQUEST

36 As well as the statistics included in this publication, the ABS has other relevant data available on request. Inquiries should be made to the National Information and Referral Service on 1300 135 070.

GLOSSARY

Average length of stay	<p>Average number of days each guest stayed during the reference period. It is a derived item calculated by dividing the number of guest nights occupied by the number of guest arrivals with the result expressed as a number of days,</p> $\text{Average length of stay(days)} = \frac{\text{Guest nights occupied}}{\text{Guest arrivals}}$
Average takings per available room night	<p>The takings from accommodation divided by the total number of room nights available for the survey period,</p> $\text{Average takings per available room night(\$)} = \frac{\text{Takings from accommodation}}{\text{Room nights available}}$
Average takings per room night occupied	<p>The takings from accommodation divided by the total number of room nights occupied for the survey period,</p> $\text{Average takings per room night occupied(\$)} = \frac{\text{Takings from accommodation}}{\text{Room nights occupied}}$
Bed occupancy rate	<p>The bed occupancy rate represents bed occupancy expressed as a percentage of total capacity available during the survey period,</p> $\text{Bed occupancy rate (\%)} = \frac{\text{Guest nights occupied}}{\text{Guest nights available}} * 100$
Bed spaces	<p>The maximum number of bed spaces normally in place available to accommodate paying guests during the survey period. Three-quarter beds are counted as one bed space; double beds as two bed spaces. Cots and divans not normally used as beds are excluded.</p>
Cabins, flats, units and villas	<p>The maximum number of cabins, flats, units and villas available at caravan parks for accommodating paying guests during the survey period.</p>
Capacity	<p>Capacity in terms of rooms/units/apartments/suites, visitor hostel bed spaces, holiday flats/units/houses or caravan park sites is the maximum number available to accommodate paying guests on the last day of the survey period. Capacity closed temporarily for seasonal reasons is included.</p>
Caravan park sites	<p>The measure of total caravan park capacity available for accommodating paying guests during the survey period. Includes on-site vans, other powered sites, unpowered sites and cabins, flats, units and villas.</p>
Caravan parks	<p>Establishments with 40 or more powered sites and cabins, flats, units and villas which provide either short-term or long-term accommodation to the general public and which provide powered sites for caravans and toilet, shower and laundry facilities for guests.</p>
Caravan parks, long-term	<p>Caravan parks where the majority of paying guests occupied sites for periods of two months or more.</p>
Caravan parks, short-term	<p>Caravan parks where the majority of paying guests occupied sites for periods of less than two months.</p>
Establishments	<p>The number of licensed hotels and resorts, motels and guest houses, serviced apartments, caravan parks and visitor hostels within the scope of the survey which operated for any part of the survey period, or which closed temporarily for the quarter for seasonal reasons.</p>
Guest arrivals	<p>The total number of paying guests counted only on the first night they stayed at the accommodation establishment during the survey period.</p> <p>For holiday flats, units and houses this is the same as unit lettings.</p> <p>This data item is not collected for caravan parks.</p>
Guest nights available	<p>The total number of nights available to all paying guests during the survey period.</p> <p>This is derived from the number of bed spaces multiplied by the number of days for which they were available during the survey period. For establishments closing (other than for seasonal reasons) or opening during this period, operating periods only are included.</p>

GLOSSARY *continued*

Guest nights occupied	The total number of paying guests counted on each night they stayed at the accommodation establishment during the survey period.
Holiday flats, units and houses	The total number of holiday flats, units and houses (excluding establishments predominantly operated on a time-share basis) operated by letting entities (i.e. owners, managers or real estate agents) who have sole letting rights to at least 15 flats, units or houses for short-term letting. These flats, units or houses should be mainly self-contained in terms of cooking, bath (or shower) and toilet facilities and should not have breakfast available for guests. Data for holiday flats, units or houses include short-term owner operators as well as paying guest accommodation.
Hotels	See licensed hotels and resorts with facilities.
Letting entities	For holiday flats, units and houses, the number of owners, managers or real estate agents within the scope of the survey who operated for any part of the survey period.
Licensed hotels and resorts with facilities	Establishments with five or more rooms which are licensed to operate a public bar and which provide accommodation on a room/suite basis, with a bath/shower and toilet in most guest rooms, but which do not have full cooking facilities (i.e. hot plates and oven/microwave) in most guest rooms.
Motels, private hotels and guest houses with facilities	Establishments with five or more rooms which are not licensed to operate a public bar, and which provide accommodation on a room/suite basis, with a bath/shower and toilet in most guest rooms, but which do not have full cooking facilities (i.e. hot plates and oven/microwave) in most guest rooms.
Multiple bedroom holiday flats, units and houses	The total number of holiday flats, units and houses available with multiple bedrooms.
Occupancy	<p>Occupancy in terms of room nights, unit nights or site nights occupied refers to the total number of nights each room, unit or caravan park was occupied during the survey period.</p> <p>Occupancy in terms of guest nights refers to the total number of paying guests counted on each night they stayed at the accommodation establishment during the survey period.</p>
On-site vans	The maximum number of vans owned or leased by the establishment for the purpose of providing accommodation to the general public.
Other powered sites	The maximum number of sites with provision for connection to electric power supply, available at caravan parks for accommodating paying guests during the survey period, excluding powered sites occupied by on-site vans, and cabins, flats, units and villas.
Other sites permanently reserved	The total number of powered and unpowered sites, on-site vans and cabins, flats, units and villas continuously let for two months or more on the last day of the survey period to tenants who occupy the sites only on a casual or sporadic basis.
Persons employed	The total number of persons working at each accommodation establishment at the end of the survey period (including working proprietors and those working on other than accommodation activities). This data item is not applicable to holiday flats, units and houses let by real estate agents.
Room nights available	The number of rooms/units available multiplied by the number of days for which they were available during the survey period. For establishments closing (other than for seasonal reasons) or opening during this period, operating periods only are included.
Room nights occupied	The number of nights each guest room/unit was occupied by a paying guest during the survey period.
Room occupancy rate	<p>The room occupancy rate represents room occupancy expressed as a percentage of total capacity available during the survey period,</p> $\text{Room occupancy rate (\%)} = \frac{\text{Room nights occupied}}{\text{Room nights available}} * 100$

GLOSSARY *continued*

Room occupancy rate <i>continued</i>	providing that, for establishments closing (other than for seasonal reasons) or opening during the survey period, the denominator of the above expression includes only operating periods.
Rooms	The maximum number of rooms available for accommodating short-term paying guests at each licensed hotel and resort, motel and guest house and serviced apartment during the survey period. Units, apartments and suites are treated as rooms for these types of establishments in these survey results.
Serviced apartments	Establishments with five or more units which mostly comprise self-contained units at the same location, and which are available on a unit/apartment basis to the general public for a minimum of one night. The units should have full cooking facilities (i.e. hot plates and oven/microwave), refrigerator and bath/shower and toilet facilities; all bed linen and towels should be provided, and daily servicing (i.e. cleaning and bed making) must be available through the on-site management, although this service may not necessarily be used.
Single bedroom holiday flats, units and houses	The total number of holiday flats, units and houses available with a single bedroom.
Site nights available	The number of caravan park sites available multiplied by the number of days for which they were available during the survey period. For establishments closing (other than for seasonal reasons) or opening during this period, operating periods only are included.
Site nights occupied	The total number of nights each caravan park site was occupied during the survey period.
Site occupancy rate	<p>The site occupancy rate for caravan parks represents site occupancy expressed as a percentage of total capacity available during the survey period,</p> $\text{Site occupancy rate (\%)} = \frac{\text{Site nights occupied}}{\text{Site nights available}} * 100$ <p>providing that, for establishments closing (other than for seasonal reasons) or opening during the survey period, the denominator of the above expression includes only operating periods.</p>
Sites occupied by long-term guests	The total number of caravan park sites occupied on the last day at the end of the survey period by guests who have stayed continuously for two months or more.
Star grading	<p>The grading of hotels, motels and guest houses with facilities and serviced apartments is based on the classification system owned by AAA Tourism Pty Ltd. The gradings are allocated according to a points system based on the amenities and facilities available to guests. Details of the grading scheme are contained in the publication <i>Accommodation Guide</i> published by AAA Tourism Pty Ltd for each of the individual Australian Motoring Organisations. For the purpose of classifying establishments to a star grading in this publication, 'half' star gradings are ignored (e.g. a two and a half star grading has been shown as two star).</p> <p>While coverage has significantly improved, some establishments (including some competing in the four and five star markets and having significant takings) still remain outside the star grading scheme. These establishments have been given a star grading of 'ungraded'.</p>
Takings from accommodation	<p>Since 1 July 2000, takings from accommodation include gross revenue from the provision of accommodation, including GST. Takings from meals are excluded. In cases where takings from accommodation data cannot be provided inclusive of GST the amount of GST payable is estimated and the data revised accordingly.</p> <p>Takings from accommodation for each month generally represent the takings received during that month. Where payments are received in advance of, or after the provision of accommodation to guests, the monthly figure for takings from accommodation may not necessarily bear a direct relationship to the number of guests accommodated during the month.</p>

GLOSSARY *continued*

Unit lettings	The total number of times a holiday flat, unit or house was occupied by a new tenant, counted only on the first night it was occupied by the new tenant. This is the equivalent of guest arrivals.
Unit nights available	The number of holiday flats, units and houses available multiplied by the number of days for which they were available during the survey period. For establishments closing (other than for seasonal reasons) or opening during this period, operating periods only are included.
Unit nights occupied	The total number of nights each holiday flat, unit or house was occupied during the survey period.
Unit occupancy rate	<p>The unit occupancy rate for holiday flats, units and houses represents unit occupancy expressed as a percentage of total capacity available during the survey period,</p> $\text{Unit occupancy rate (\%)} = \frac{\text{Unit nights occupied}}{\text{Unit nights available}} * 100$ <p>providing that, for letting entities closing (other than for seasonal reasons) or opening during the survey period, the denominator of the above expression includes only operating periods.</p>
Unpowered sites	The maximum number of sites with no provision for connection to electric power supply, available at caravan parks for accommodating paying guests during the survey period.
Visitor hostels	Establishments with 25 or more bed spaces which provide accommodation to visitors on a bed basis (rather than by room). This category does not include establishments providing charity type accommodation (e.g. Salvation Army hostels) nor hotels, motels and guest houses without in-room facilities which provide accommodation on a per room basis.

FOR MORE INFORMATION . . .

INTERNET **www.abs.gov.au** the ABS website is the best place for data from our publications and information about the ABS.

INFORMATION AND REFERRAL SERVICE

Our consultants can help you access the full range of information published by the ABS that is available free of charge from our website. Information tailored to your needs can also be requested as a 'user pays' service. Specialists are on hand to help you with analytical or methodological advice.

PHONE 1300 135 070

EMAIL client.services@abs.gov.au

FAX 1300 135 211

POST Client Services, ABS, GPO Box 796, Sydney NSW 2001

FREE ACCESS TO STATISTICS

All statistics on the ABS website can be downloaded free of charge.

WEB ADDRESS **www.abs.gov.au**